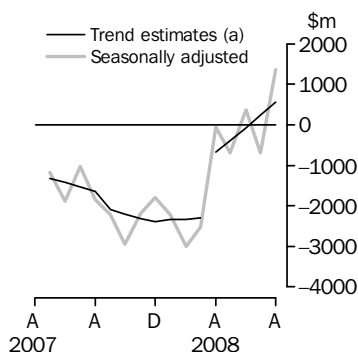


# INTERNATIONAL TRADE IN GOODS AND SERVICES

AUSTRALIA

EMBARGO: 11.30AM (CANBERRA TIME) THURS 2 OCT 2008

## Balance on Goods and Services



## KEY FIGURES

	June 2008	July 2008	August 2008	Jul 08 to Aug 08 %
	\$m	\$m	\$m	change
<b>BALANCE ON GOODS AND SERVICES</b>				
Trend estimates	-73	245	563	130
Seasonally adjusted	365	-697	1 364	..
<b>CREDITS (Exports of goods &amp; services)</b>				
Trend estimates	22 981	23 559	24 095	2
Seasonally adjusted	23 245	23 124	24 610	6
<b>DEBITS (Imports of goods &amp; services)</b>				
Trend estimates	23 054	23 314	23 532	1
Seasonally adjusted	22 880	23 821	23 246	-2

.. not applicable

## KEY POINTS

### BALANCE ON GOODS AND SERVICES

- The trend estimate of the *balance on goods and services* was a surplus of \$563m in August 2008, an increase of \$318m on a revised surplus in July 2008.
- In seasonally adjusted terms, the *balance on goods and services* was a surplus of \$1,364m in August 2008, a turnaround of \$2,061m on a revised deficit in July 2008.
- The seasonally adjusted surplus was primarily due to the strong rise in *non rural and other goods credits* and the fall in *fuels and lubricants debits*.

### CREDITS (EXPORTS OF GOODS & SERVICES)

- Seasonally adjusted, *goods and services credits* rose \$1,486m (6%) to \$24,610m. *Non-rural goods* rose \$1,536m (11%) and *rural goods* rose \$79m (4%), while *other goods* fell \$147m (9%). *Services credits* rose \$18m.
- The rise in *non-rural goods* was largely driven by *coal, coke and briquettes*, which rose \$943m (26%) and *metal ores and minerals* which rose \$215m (5%).

### DEBITS (IMPORTS OF GOODS & SERVICES)

- Seasonally adjusted, *goods and services debits* fell \$575m (2%) to \$23,246m. *Intermediate and other merchandise goods* fell \$623m (7%), *other goods* fell \$125m (11%) and *consumption goods* fell \$52m (1%) while *capital goods* rose \$238m (6%). *Services debits* fell \$10m.
- The decrease in *intermediate and other merchandise goods* was driven by *fuels and lubricants*, which fell \$887m (25%).

## INQUIRIES

For further information contact Selvi Sekhar on Canberra (02) 6252 5540 for goods, and Karen McGuigan on Canberra (02) 6252 5415 for services.

# NOTES

## FORTHCOMING ISSUES

ISSUE	RELEASE DATE
September 2008	5 November 2008
October 2008	4 December 2008
November 2008	8 January 2009
December 2008	3 February 2009
January 2009	5 March 2009
February 2009	2 April 2009

.....

## REVISIONS

Revisions have been made to incorporate the latest available data relating to merchandise trade and international trade in services. In original terms, these revisions have :

- decreased the deficit on goods and services for July 2008 by \$21m
- increased the deficit on goods and services for 2007–08 by \$2,013m, with:
  - goods and services credits decreasing by \$248m (see page 4 for revisions to coal and iron ore prices)
  - goods and services debits increasing by \$1,765m, primarily due to the incorporation of the results from the June quarter 2008 Survey of International Trade in Services and revised survey data for earlier periods
- increased the deficit on goods and services for 2006-07 by \$596m.

These revisions will have some impact on the terms of trade but are not expected to impact on the volume measures of GDP.

## COAL AND IRON ORE PRICES

Revisions have been made to coal and iron ore prices in the Balance of Payments series. For details see page 4 – Revisions to Coal and Iron Ore Prices.

.....

## ABBREVIATIONS

\$b	billion (thousand million) dollars
\$m	million dollars
ABS	Australian Bureau of Statistics
APEC	Asia Pacific Economic Co-operation
ASEAN	Association of South-East Asian Nations
n.e.s.	not elsewhere specified
n.i.e.	not included elsewhere
OECD	Organisation for Economic Co-operation and Development
SAR	Special Administrative Region
SITC	Standard International Trade Classification

Susan Linacre  
Acting Australian Statistician

# CONTENTS

page

Revisions to Coal and Iron Ore Prices . . . . .	4
Time series data . . . . .	5

## ANALYSIS

Analysis and comments . . . . .	6
---------------------------------	---

## TABLES

### INTERNATIONAL TRADE IN GOODS AND SERVICES – BALANCE OF PAYMENTS BASIS

<b>1</b> Goods and services, summary, seasonally adjusted and trend estimates . . . .	11
<b>2</b> Goods and services, summary, original . . . . .	12
<b>3</b> Goods credits, original . . . . .	13
<b>4</b> Goods debits, original . . . . .	14
<b>5</b> Goods credits, seasonally adjusted . . . . .	15
<b>6</b> Goods debits, seasonally adjusted . . . . .	16
<b>7</b> Goods credits, trend estimates . . . . .	17
<b>8</b> Goods debits, trend estimates . . . . .	18
<b>9</b> Services, summary, original . . . . .	19
<b>10</b> Services, summary, seasonally adjusted and trend estimates . . . . .	20
<b>11</b> Services, original, quarterly . . . . .	21

### INTERNATIONAL MERCHANDISE TRADE – RECORDED TRADE BASIS

<b>12</b> International merchandise exports, by commodity . . . . .	22
<b>13</b> International merchandise imports, by commodity . . . . .	25
<b>14</b> International merchandise trade, by country and country groups . . . . .	28
<b>15</b> International merchandise trade, by state . . . . .	29

### OTHER TABLES

<b>16</b> Period average exchange rates per Australian dollar . . . . .	30
---	----

## OTHER INFORMATION

Explanatory Notes . . . . .	31
Appendix - Related articles . . . . .	35

## REVISIONS TO COAL AND IRON ORE PRICES

### REVISIONS TO COAL AND IRON ORE PRICES

Goods exports data presented in this publication are primarily based on information provided by exporters to the Australian Customs Service. At the time of export, the final valuation details are not known for some commodities and exporters have six months to finalise their Customs entries. The late finalisation of recent contract price negotiations for coal and iron ore meant that more entries than usual for these commodities were lodged without the final valuation being certain.

As a result the recorded trade series for coal and iron ore from April 2008 have not fully reflected the expected final unit prices. However, adjustments have been included in the respective balance of payments series for the April to July 2008 months to account for the delay in finalising the Customs entries. The adjustments are reviewed each month as revised Customs entries are lodged and as other information (e.g. company statements) become available.

The adjustments for both coal and iron ore reflect the expected contract price increases based on the pattern of revisions that have occurred in past years where contracted prices have been backdated.

In this issue, the April to June 2008 adjustments for coal and iron ore prices have been reduced for the revisions in Customs entries where new contract prices have replaced old prices and for updated expectations of the level and timing of further revisions. The remaining adjustments included in this issue for coal are \$200m for both April and May and \$100m for June. For iron ore the remaining adjustment for April, May and June is \$300m for each month with a \$100m adjustment for July.

Revising the adjustments for updated expectations of the level and timing of further revisions to Customs entries has reduced goods credits for the June quarter 2008 by about \$600m.

## TIME SERIES DATA

### TIME SERIES DATA

Data available free on the ABS web site include longer time series of tables in this publication and additional spreadsheets and data cubes are listed below.

- 31 Merchandise exports by Broad Economic Category (BEC)
- 32 Merchandise exports by industry of origin (ANZSIC)
- 33 Merchandise imports by Broad Economic Category (BEC)
- 34 Merchandise imports by Balance of Payments Broad Economic Category (BoPBEC)
- 35 Merchandise imports by industry of origin (ANZSIC)
- 36 Merchandise exports, state by country and country groups
- 37 Merchandise imports, state by country and country groups
- 91 Monthly seasonal adjustment factors and forward factors for 12 months.

### TRADE IN SERVICES DATA CUBES

Data are usually updated on an annual basis - with the March issue of 5368.0 for calendar year and with the September issue for financial year.

*Financial year (cat. no.  
5368.0.55.003)*

- 1 International trade in services, credits, state by financial year
- 2 International trade in services, credits, financial year by state
- 3 International trade in services, debits, state by financial year
- 4 International trade in services, debits, financial year by state
- 5 International trade in services, credits, financial year by country and service
- 6 International trade in services, credits, service by financial year and by country
- 7 International trade in services, debits, financial year by country and service
- 8 International trade in services, debits, service by financial year and by country
- 9 International trade in services, financial year by detailed service.

*Calendar year (cat. no.  
5368.0.55.004)*

- 1 International trade in services, credits, state by calendar year
- 2 International trade in services, credits, calendar year by state
- 3 International trade in services, debits, state by calendar year
- 4 International trade in services, debits, calendar year by state
- 5 International trade in services, credits, calendar year by country and service
- 6 International trade in services, credits, service by calendar year and by country
- 7 International trade in services, debits, calendar year by country and service
- 8 International trade in services, debits, service by calendar year and by country
- 9 International trade in services, calendar year by detailed service
- 10 International trade in services, credits, calendar year by country and travel service
- 11 International trade in services, debits, calendar year by country and travel service.

## ANALYSIS AND COMMENTS

### BALANCE ON GOODS AND SERVICES

The trend estimate of the balance on goods and services in August 2008 was a surplus of \$563m, an increase of \$318m on the revised surplus in July 2008.

In seasonally adjusted terms, the balance on goods and services in August 2008 was a surplus of \$1,364m, a turnaround of \$2,061m on the revised deficit in July 2008.

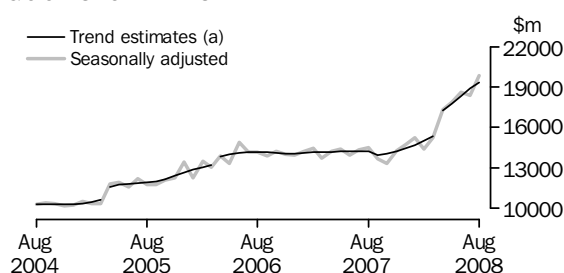
### EXPORTS OF GOODS AND SERVICES

The trend estimate of goods and services credits rose \$536m (2%) between July and August to \$24,095m.

In seasonally adjusted terms, goods and services credits rose \$1,486m (6%) to \$24,610m. Non-rural goods rose \$1,536m (11%) and rural goods rose \$79m (4%), while other goods fell \$147m (9%). Services credits rose \$18m.

#### *Exports of goods*

### GOODS CREDITS



(a) Trend breaks of \$819m to April 2005, \$500m to April 2006 and \$1,433m to April 2008 have been applied.

### RURAL GOODS

In trend terms, exports of rural goods fell \$12m (1%) to \$2,279m.

In seasonally adjusted terms, export of rural goods rose \$79m (4%) to \$2,287m.

The main components contributing to the rise in the seasonally adjusted estimates were:

- other rural, up \$37m (4%)
- cereal grains and cereal preparations, up \$28m (6%).

In original terms, exports of rural goods rose \$155m (7%) to \$2,303m.

### NON-RURAL GOODS

In trend terms, exports of non-rural goods rose \$444m (3%) to \$15,667m.

In seasonally adjusted terms, exports of non-rural goods rose \$1,536m (11%) to \$16,115m.

The main components contributing to the rise in the seasonally adjusted estimates were:

- coal, coke and briquettes, up \$943m (26%)
- metal ores and minerals, up \$215m (5%)
- other non-rural, up \$200m (25%)
- metals (excl. non-monetary gold), up \$141m (12%).

Partly offsetting these increases was the other mineral fuels component, down \$98m (5%).

In original terms, exports of non-rural goods rose \$1,735m (12%) to \$16,580m.

Metallurgical coal increased by \$979m with volumes up 15% and prices up 22%.

## ANALYSIS AND COMMENTS *continued*

### Exports of goods *continued*

#### OTHER GOODS

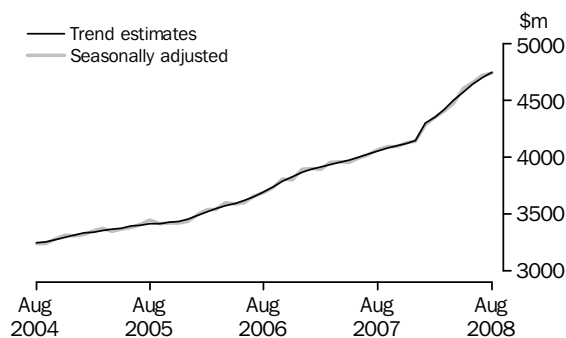
In trend terms, exports of other goods rose \$59m (4%) to \$1,405m.

In seasonally adjusted terms, exports of other goods fell \$147m (9%) to \$1,473m with non-monetary gold, down \$154m (11%).

In original terms, exports of other goods fell \$135m (8%) to \$1,483m.

### Exports of services

#### SERVICES CREDITS



In trend terms, services credits rose \$46m (1%) to \$4,744m.

In seasonally adjusted terms, services credits rose \$18m to \$4,735m.

Components contributing to the rise in the seasonally adjusted estimates were:

- other services, up \$11m (1%)
- travel services, up \$11m.

Partly offsetting these increases was the transportation services component, down \$4m.

In seasonally adjusted terms, tourism related services credits rose \$6m to \$2,985m.

### IMPORTS OF GOODS AND SERVICES

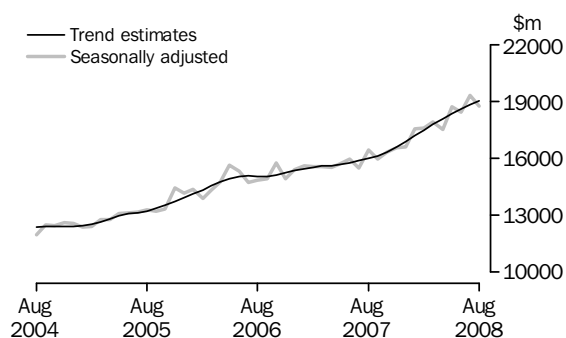
The trend estimate of goods and services debits rose \$218m (1%) between July and August to \$23,532m.

In seasonally adjusted terms, goods and services debits fell \$575m (2%) to \$23,246m.

Intermediate and other merchandise goods fell \$623m (7%), other goods fell \$125m (11%) and consumption goods fell \$52m (1%), while capital goods rose \$238m (6%). Services debits fell \$10m.

### Imports of goods

#### GOODS DEBITS



## ANALYSIS AND COMMENTS *continued*

### *Imports of goods continued*

#### CONSUMPTION GOODS

In trend terms, imports of consumption goods fell \$6m to \$5,112m.

In seasonally adjusted terms, imports of consumption goods fell \$52m (1%) to \$5,054m.

The main component contributing to the fall in the seasonally adjusted estimates was household electrical items, down \$113m (23%).

Partly offsetting this were:

- consumption goods n.e.s., up \$52m (3%)
- non-industrial transport equipment, up \$45m (3%).

In original terms, imports of consumption goods fell \$215m (4%) to \$5,071m.

#### CAPITAL GOODS

In trend terms, imports of capital goods rose \$37m (1%) to \$4,119m.

In seasonally adjusted terms, imports of capital goods rose \$238m (6%) to \$4,261m.

The main component contributing to the rise in the seasonally adjusted estimates was civil aircraft, up \$202m (112%).

In original terms, imports of capital goods rose \$160m (4%) to \$4,213m.

#### INTERMEDIATE AND OTHER MERCHANDISE GOODS

In trend terms, imports of intermediate and other merchandise goods rose \$118m (1%) to \$8,742m.

In seasonally adjusted terms, imports of intermediate and other merchandise goods fell \$623m (7%) to \$8,437m.

The main component contributing to the fall in the seasonally adjusted estimates was fuels and lubricants, down \$887m (25%).

In original terms, crude petroleum oils decreased \$299m (15%) with volumes down 14% and prices down 1%. Refined petroleum oils decreased \$544m (37%) with volumes down 34% and prices down 4%. Contributing to the decrease in refined petroleum oils were:

- diesel decreased \$283m
- gasoline decreased \$117m
- fuel oils decreased \$79m
- jet fuel decreased \$77m.

In original terms, imports of intermediate and other merchandise goods fell \$731m (8%) to \$8,485m.

#### OTHER GOODS

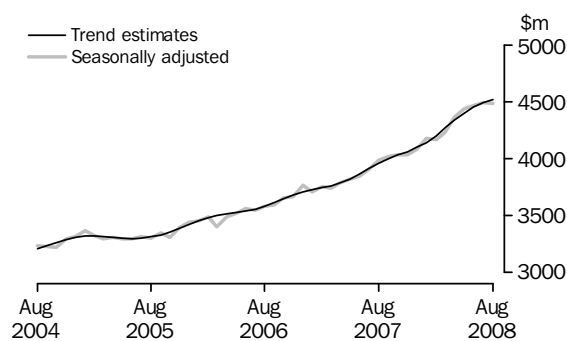
In trend terms, imports of other goods rose \$39m (4%) to \$1,039m.

In both original terms and seasonally adjusted terms, imports of other goods debits fell \$125m (11%) to \$1,011m. The main component contributing to the fall was goods for processing, down \$158m.

## ANALYSIS AND COMMENTS *continued*

### Imports of services

### SERVICES DEBITS



In trend terms, services debits rose \$30m (1%) to \$4,520m.

In seasonally adjusted terms, services debits fell \$10m to \$4,485m.

Components contributing to the fall in the seasonally adjusted estimates were:

- transportation services, down \$15m (1%)
- travel services, down \$12m (1%).

Partly offsetting these decreases was the other services component, up \$16m (1%).

In seasonally adjusted terms, tourism related services debits fell \$26m (1%) to \$2,152m.



GOODS AND SERVICES(a), Summary: **Seasonally Adjusted and Trend Estimates**

Months	BALANCE	CREDITS					DEBITS					
	<b>On goods and services</b>	<i>Total goods and services</i>	<i>Total goods</i>	<i>Rural goods(b)</i>	<i>Non-rural and other goods(b)</i>	<i>Total services</i>	<i>Total goods and services</i>	<i>Total goods</i>	<i>Con- sumption goods</i>	<i>Capital goods</i>	<i>Inter- mediate and other goods</i>	<i>Total services</i>
	\$m	\$m	\$m	\$m	\$m	\$m	\$m	\$m	\$m	\$m	\$m	\$m
SEASONALLY ADJUSTED												
<b>2007</b>												
June	<b>-1 886</b>	17 934	13 943	1 871	12 072	3 991	-19 820	-15 975	-4 577	-3 611	-7 786	-3 845
July	<b>-1 020</b>	18 344	14 328	1 961	12 366	4 017	-19 365	-15 460	-4 611	-3 275	-7 574	-3 904
August	<b>-1 844</b>	18 566	14 499	1 871	12 628	4 067	-20 410	-16 421	-4 755	-3 721	-7 945	-3 989
September	<b>-2 222</b>	17 741	13 644	1 990	11 655	4 096	-19 962	-15 943	-4 766	-3 712	-7 466	-4 019
October	<b>-2 948</b>	17 397	13 306	1 893	11 413	4 091	-20 346	-16 310	-4 739	-3 490	-8 080	-4 036
November	<b>-2 191</b>	18 398	14 272	1 948	12 324	4 126	-20 589	-16 556	-4 897	-3 709	-7 950	-4 033
December	<b>-1 794</b>	18 866	14 726	2 143	12 583	4 141	-20 661	-16 578	-4 977	-3 829	-7 771	-4 083
<b>2008</b>												
January	<b>-2 223</b>	19 506	15 221	2 145	13 076	4 285	-21 729	-17 546	-5 137	-3 703	-8 706	-4 183
February	<b>-3 011</b>	18 746	14 394	2 124	12 270	4 351	-21 756	-17 588	-5 064	-3 983	-8 541	-4 168
March	<b>-2 516</b>	19 629	15 226	2 245	12 981	4 403	-22 145	-17 914	-5 206	-4 222	-8 486	-4 231
April	<b>-59</b>	21 802	17 328	2 410	14 918	4 475	-21 862	-17 496	-4 924	-3 761	-8 811	-4 366
May	<b>-694</b>	22 454	17 847	2 360	15 487	4 607	-23 148	-18 707	-5 249	-3 841	-9 617	-4 441
June	<b>365</b>	23 245	18 596	2 256	16 340	4 649	-22 880	-18 418	-5 168	-4 142	-9 108	-4 463
July	<b>-697</b>	23 124	18 407	2 208	16 199	4 717	-23 821	-19 326	-5 106	-4 023	-10 196	-4 495
August	<b>1 364</b>	24 610	19 875	2 287	17 588	4 735	-23 246	-18 762	-5 054	-4 261	-9 448	-4 485
TREND ESTIMATES												
<b>2007</b>												
June	<b>-1 418</b>	18 222	14 225	1 915	12 310	3 997	-19 640	-15 774	-4 619	-3 531	-7 623	-3 866
July	<b>-1 538</b>	18 249	14 224	1 904	12 320	4 024	-19 786	-15 873	-4 636	-3 555	-7 682	-3 913
August	<b>-1 636</b>	18 305	14 254	1 908	12 346	4 052	-19 941	-15 984	-4 679	-3 581	-7 724	-3 958
September	<b>-2 099</b>	18 022	13 946	1 928	12 018	4 077	-20 121	-16 123	-4 743	-3 599	-7 781	-3 998
October	<b>-2 204</b>	18 156	14 057	1 958	12 098	4 100	-20 361	-16 329	-4 823	-3 638	-7 868	-4 032
November	<b>-2 304</b>	18 345	14 225	2 001	12 223	4 121	-20 649	-16 587	-4 907	-3 704	-7 976	-4 062
December	<b>-2 398</b>	18 583	14 437	2 061	12 376	4 146	-20 981	-16 884	-4 980	-3 780	-8 123	-4 097
<b>2008</b>												
January	<b>-2 325</b>	19 002	14 704	2 133	12 570	4 298	-21 327	-17 185	-5 043	-3 847	-8 295	-4 143
February	<b>-2 328</b>	19 365	15 013	2 206	12 807	4 351	-21 692	-17 489	-5 091	-3 898	-8 500	-4 203
March	<b>-2 290</b>	19 776	15 356	2 262	13 095	4 419	-22 066	-17 794	-5 119	-3 938	-8 737	-4 272
April(c)	<b>-673</b>	21 743	17 248	2 292	14 956	4 495	-22 416	-18 076	-5 127	-3 964	-8 985	-4 340
May	<b>-395</b>	22 352	17 782	2 301	15 481	4 570	-22 747	-18 347	-5 127	-3 992	-9 228	-4 400
June	<b>-73</b>	22 981	18 342	2 299	16 042	4 639	-23 054	-18 604	-5 125	-4 033	-9 446	-4 450
July	<b>245</b>	23 559	18 860	2 291	16 569	4 698	-23 314	-18 824	-5 118	-4 082	-9 624	-4 490
August	<b>563</b>	24 095	19 351	2 279	17 072	4 744	-23 532	-19 012	-5 112	-4 119	-9 781	-4 520

(a) For sign conventions, see paragraph 11 of the Explanatory Notes.

(b) For all time periods, estimates for sugar, sugar preparations and honey are included in Non-rural and other goods.

(c) A trend break of \$1,433m has been applied to Non-rural and other goods credits and related aggregates in April 2008.

## GOODS AND SERVICES(a), Summary: Original

	BALANCE	CREDITS					DEBITS					
	<i>On goods and services</i>	<i>Total goods and services</i>	<i>Total goods</i>	<i>Rural goods(b)</i>	<i>Non-rural and other goods(b)</i>	<i>Total services</i>	<i>Total goods and services</i>	<i>Total goods</i>	<i>Con- sumption goods</i>	<i>Capital goods</i>	<i>Inter- mediate and other goods</i>	<i>Total services</i>
	\$m	\$m	\$m	\$m	\$m	\$m	\$m	\$m	\$m	\$m	\$m	\$m
FINANCIAL YEAR												
<b>2005-06</b>	<b>-14 520</b>	196 274	154 425	25 266	129 159	41 849	-210 794	-169 716	-50 221	-40 077	-79 418	-41 078
<b>2006-07</b>	<b>-12 757</b>	215 695	169 514	25 075	144 439	46 181	-228 452	-184 024	-54 913	-41 765	-87 346	-44 428
<b>2007-08</b>	<b>-19 921</b>	234 862	183 543	25 463	158 080	51 319	-254 783	-204 820	-59 382	-45 355	-100 083	-49 963
MONTHS												
<b>2007</b>												
June	<b>-1 927</b>	17 686	13 998	1 909	12 089	3 688	-19 613	-15 709	-4 327	-3 769	-7 613	-3 904
July	<b>-1 028</b>	18 501	14 412	1 892	12 520	4 089	-19 529	-15 480	-4 625	-3 278	-7 577	-4 049
August	<b>-2 119</b>	18 952	14 797	1 862	12 935	4 155	-21 071	-17 107	-5 048	-3 800	-8 259	-3 964
September	<b>-2 336</b>	17 789	13 819	2 005	11 814	3 970	-20 125	-15 822	-4 938	-3 599	-7 285	-4 303
October	<b>-3 901</b>	18 042	13 812	1 943	11 869	4 230	-21 943	-17 732	-5 543	-3 716	-8 473	-4 211
November	<b>-3 235</b>	18 378	14 188	1 962	12 226	4 190	-21 613	-17 687	-5 485	-4 085	-8 117	-3 926
December	<b>-318</b>	19 823	15 699	2 250	13 449	4 124	-20 141	-15 886	-4 739	-3 794	-7 353	-4 255
<b>2008</b>												
January	<b>-3 741</b>	17 760	13 562	1 829	11 733	4 198	-21 501	-17 093	-4 844	-3 526	-8 723	-4 408
February	<b>-2 400</b>	18 268	13 757	2 137	11 620	4 511	-20 668	-16 885	-4 812	-3 640	-8 433	-3 783
March	<b>-903</b>	20 141	15 580	2 367	13 213	4 561	-21 044	-17 013	-4 594	-4 120	-8 299	-4 031
April	<b>-498</b>	21 499	16 965	2 419	14 546	4 534	-21 997	-17 761	-4 957	-3 749	-9 055	-4 236
May	<b>74</b>	22 853	18 400	2 628	15 772	4 453	-22 779	-18 519	-5 025	-3 820	-9 674	-4 260
June	<b>484</b>	22 856	18 552	2 169	16 383	4 304	-22 372	-17 835	-4 772	-4 228	-8 835	-4 537
July	<b>-925</b>	23 409	18 611	2 148	16 463	4 798	-24 334	-19 691	-5 286	-4 053	-10 352	-4 643
August	<b>2 064</b>	25 239	20 366	2 303	18 063	4 873	-23 175	-18 780	-5 071	-4 213	-9 496	-4 395
FINANCIAL YEAR TO DATE												
<b>2 months ended August</b>												
2007	<b>-3 147</b>	37 453	29 209	3 754	25 455	8 244	-40 600	-32 587	-9 673	-7 078	-15 836	-8 013
2008	<b>1 139</b>	48 648	38 977	4 451	34 526	9 671	-47 509	-38 471	-10 357	-8 266	-19 848	-9 038

(a) For sign conventions, see paragraph 11 of the Explanatory Notes.

(b) For all time periods, estimates for sugar, sugar preparations and honey are included in Non-rural and other goods.

							2 MONTHS ENDED AUGUST		Change
	2005-06	2006-07	2007-08	Jun 2008	Jul 2008	Aug 2008	2007	2008	
	\$m	\$m	\$m	\$m	\$m	\$m	\$m	\$m	%
<b>Total goods credits</b>	<b>154 425</b>	<b>169 514</b>	<b>183 543</b>	<b>18 552</b>	<b>18 611</b>	<b>20 366</b>	<b>29 209</b>	<b>38 977</b>	<b>33.4</b>
<i>Rural goods</i>	25 266	25 075	25 463	2 169	2 148	2 303	3 754	4 451	18.6
Meat and meat preparations	6 709	7 078	6 539	551	575	582	1 031	1 157	12.2
Cereal grains and cereal preparations	4 852	4 171	4 992	505	488	516	579	1 004	73.4
Wool and sheepskins	2 544	3 065	2 796	179	196	135	339	331	-2.4
Other rural(a)	11 161	10 761	11 136	934	889	1 070	1 805	1 959	8.5
<i>Non-rural goods</i>	118 210	131 813	143 882	15 325	14 845	16 580	23 034	31 425	36.4
Metal ores and minerals	28 934	35 315	41 725	4 586	4 500	4 752	6 319	9 252	46.4
Coal, coke and briquettes	24 352	21 928	25 037	4 055	3 634	4 594	3 353	8 228	145.4
Other mineral fuels	13 218	15 642	18 791	1 885	1 968	1 941	2 969	3 909	31.7
Metals (excl. non-monetary gold)	11 271	14 820	14 034	1 304	1 200	1 373	2 478	2 573	3.8
Machinery	8 066	8 422	8 791	685	737	822	1 507	1 559	3.5
Transport equipment	5 314	4 648	5 719	471	537	566	927	1 103	19.0
Other manufactures	14 996	16 268	17 002	1 405	1 481	1 553	2 982	3 034	1.7
Other non-rural (incl. sugar and beverages)	12 059	14 770	12 783	934	788	979	2 499	1 767	-29.3
<i>Other goods</i>	10 949	12 626	14 198	1 058	1 618	1 483	2 421	3 101	28.1
Goods for processing	368	417	276	23	31	40	42	71	69.0
Repairs on goods	74	90	103	10	10	10	16	20	25.0
Goods procured in ports by carriers	1 420	1 379	1 547	143	142	152	231	294	27.3
Non-monetary gold	9 087	10 740	12 272	882	1 435	1 281	2 132	2 716	27.4

(a) For all time periods, estimates for sugar, sugar preparations and honey are included in Other non-rural.

## GOODS DEBITS(a): Original

							2 MONTHS ENDED AUGUST		Change
	2005-06	2006-07	2007-08	Jun 2008	Jul 2008	Aug 2008	2007	2008	
	\$m	\$m	\$m	\$m	\$m	\$m	\$m	\$m	%
<b>Total goods debits</b>	<b>-169 716</b>	<b>-184 024</b>	<b>-204 820</b>	<b>-17 835</b>	<b>-19 691</b>	<b>-18 780</b>	<b>-32 587</b>	<b>-38 471</b>	<b>18.1</b>
<i>Consumption goods</i>	-50 221	-54 913	-59 382	-4 772	-5 286	-5 071	-9 673	-10 357	7.1
Food and beverages, mainly for consumption	-6 169	-7 182	-7 839	-601	-666	-656	-1 282	-1 322	3.1
Household electrical items	-4 191	-4 525	-5 051	-480	-506	-388	-838	-894	6.7
Non-industrial transport equipment	-13 596	-14 894	-16 872	-1 395	-1 416	-1 388	-2 454	-2 804	14.3
Textiles, clothing and footwear	-6 364	-6 805	-7 051	-501	-641	-660	-1 271	-1 301	2.4
Toys, books and leisure goods	-4 057	-4 328	-4 576	-376	-428	-402	-729	-830	13.9
Consumption goods n.e.s.	-15 844	-17 179	-17 993	-1 419	-1 629	-1 577	-3 099	-3 206	3.5
<i>Capital goods</i>	-40 077	-41 765	-45 355	-4 228	-4 053	-4 213	-7 078	-8 266	16.8
Machinery and industrial equipment	-14 347	-15 330	-16 483	-1 379	-1 511	-1 601	-2 669	-3 112	16.6
ADP equipment	-6 158	-7 008	-7 075	-611	-575	-554	-1 223	-1 129	-7.7
Telecommunications equipment	-5 320	-5 315	-5 789	-483	-473	-426	-889	-899	1.1
Civil aircraft	-2 967	-1 667	-2 691	-500	-180	-382	-306	-562	83.7
Industrial transport equipment n.e.s.	-5 491	-6 454	-7 555	-758	-816	-770	-1 094	-1 586	45.0
Capital goods n.e.s.	-5 794	-5 991	-5 762	-497	-498	-480	-897	-978	9.0
<i>Intermediate and other merchandise goods</i>	-72 737	-79 923	-90 465	-7 961	-9 216	-8 485	-14 106	-17 701	25.5
Food and beverages, mainly for industry	-651	-819	-923	-69	-84	-90	-147	-174	18.4
Primary industrial supplies n.e.s.	-1 186	-1 552	-1 477	-124	-191	-179	-250	-370	48.0
Fuels and lubricants	-21 014	-21 470	-29 558	-2 823	-3 616	-2 729	-3 979	-6 345	59.5
Parts for transport equipment	-7 315	-8 355	-8 833	-733	-805	-834	-1 512	-1 639	8.4
Parts for ADP equipment	-1 857	-1 620	-1 115	-95	-86	-84	-210	-170	-19.0
Other parts for capital goods	-10 166	-11 780	-11 975	-972	-1 062	-1 038	-2 052	-2 100	2.3
Organic and inorganic chemicals	-4 133	-4 406	-4 674	-419	-430	-493	-797	-923	15.8
Paper and paperboard	-2 303	-2 368	-2 362	-186	-225	-214	-447	-439	-1.8
Textile yarn and fabrics	-1 361	-1 366	-1 334	-104	-111	-112	-231	-223	-3.5
Iron and steel	-3 240	-3 817	-3 720	-370	-430	-489	-653	-919	40.7
Plastics	-2 517	-2 957	-3 064	-249	-267	-262	-504	-529	5.0
Processed industrial supplies n.e.s.	-15 863	-17 794	-20 011	-1 703	-1 793	-1 813	-3 118	-3 606	15.7
Other merchandise goods	-1 131	-1 619	-1 419	-114	-116	-148	-206	-264	28.2
<i>Other goods</i>	-6 681	-7 423	-9 618	-874	-1 136	-1 011	-1 730	-2 147	24.1
Goods for processing	-445	-507	-244	-13	-159	-1	-8	-160	1 900.0
Repairs on goods	-115	-131	-117	-9	-11	-11	-31	-22	-29.0
Goods procured in ports by carriers	-1 406	-1 468	-1 629	-139	-159	-159	-238	-318	33.6
Non-monetary gold	-4 715	-5 317	-7 628	-713	-807	-840	-1 453	-1 647	13.4

(a) For sign conventions, see paragraph 11 of the Explanatory Notes.

## GOODS CREDITS: Seasonally Adjusted

	Nov 2007	Dec 2007	Jan 2008	Feb 2008	Mar 2008	Apr 2008	May 2008	Jun 2008	Jul 2008	Aug 2008
	\$m	\$m	\$m	\$m	\$m	\$m	\$m	\$m	\$m	\$m
<b>Total goods credits</b>	<b>14 272</b>	<b>14 726</b>	<b>15 221</b>	<b>14 394</b>	<b>15 226</b>	<b>17 328</b>	<b>17 847</b>	<b>18 596</b>	<b>18 407</b>	<b>19 875</b>
<i>Rural goods</i>	1 948	2 143	2 145	2 124	2 245	2 410	2 360	2 256	2 208	2 287
Meat and meat preparations	555	581	524	484	534	581	598	563	575	588
Cereal grains and cereal preparations	229	343	397	458	505	562	623	589	501	529
Wool and sheepskins	259	278	257	237	230	219	218	182	212	214
Other rural(a)	905	941	967	945	976	1 048	922	922	919	956
<i>Non-rural goods</i>	11 076	11 514	11 711	10 923	11 835	13 474	14 416	15 286	14 579	16 115
Metal ores and minerals	3 185	3 208	3 680	2 971	3 455	4 205	4 443	4 404	4 504	4 719
Coal, coke and briquettes(b)	1 643	1 835	1 762	1 483	1 832	2 541	3 120	4 114	3 568	4 511
Other mineral fuels(c)	1 506	1 482	1 651	1 692	1 720	1 700	1 905	2 000	1 823	1 725
Metals (excl. non-monetary gold)(c)	1 143	1 340	869	1 157	1 199	1 149	1 203	1 215	1 218	1 359
Machinery	730	730	754	754	707	755	729	693	709	790
Transport equipment	466	470	509	523	448	476	543	491	518	531
Other manufactures	1 370	1 384	1 483	1 296	1 384	1 553	1 430	1 416	1 427	1 469
Other non-rural (incl. sugar and beverages)	1 034	1 065	1 002	1 048	1 089	1 096	1 043	953	811	1 011
<i>Other goods</i>	1 248	1 069	1 365	1 347	1 146	1 444	1 071	1 054	1 620	1 473
Goods for processing(d)	25	30	25	28	18	31	22	23	31	40
Repairs on goods(d)	8	7	6	11	7	11	10	10	10	10
Goods procured in ports by carriers(c)	132	147	133	133	138	139	140	139	144	142
Non-monetary gold(d)	1 083	885	1 201	1 175	983	1 263	899	882	1 435	1 281

(a) For all time periods, estimates for sugar, sugar preparations and honey are included in Other non-rural.

(b) Only a length-of-month effect has been applied to this component.

(c) In using these seasonally adjusted series, care should be exercised because of the difficulties associated with reliably estimating the seasonal pattern.

(d) This component is not seasonally adjusted.

## GOODS DEBITS(a): Seasonally Adjusted

	Nov 2007	Dec 2007	Jan 2008	Feb 2008	Mar 2008	Apr 2008	May 2008	Jun 2008	Jul 2008	Aug 2008
	\$m	\$m	\$m	\$m	\$m	\$m	\$m	\$m	\$m	\$m
<b>Total goods debits</b>	<b>-16 556</b>	<b>-16 578</b>	<b>-17 546</b>	<b>-17 588</b>	<b>-17 914</b>	<b>-17 496</b>	<b>-18 707</b>	<b>-18 418</b>	<b>-19 326</b>	<b>-18 762</b>
<i>Consumption goods</i>	<i>-4 897</i>	<i>-4 977</i>	<i>-5 137</i>	<i>-5 064</i>	<i>-5 206</i>	<i>-4 924</i>	<i>-5 249</i>	<i>-5 168</i>	<i>-5 106</i>	<i>-5 054</i>
Food and beverages, mainly for consumption	-634	-622	-659	-678	-659	-673	-696	-689	-690	-680
Household electrical items	-415	-406	-418	-425	-383	-408	-414	-561	-489	-376
Non-industrial transport equipment	-1 417	-1 444	-1 548	-1 442	-1 597	-1 424	-1 519	-1 361	-1 412	-1 457
Textiles, clothing and footwear	-579	-596	-589	-597	-578	-586	-619	-606	-592	-604
Toys, books and leisure goods	-381	-399	-415	-383	-388	-379	-432	-401	-420	-381
Consumption goods n.e.s.	-1 472	-1 511	-1 508	-1 540	-1 602	-1 453	-1 568	-1 549	-1 504	-1 556
<i>Capital goods</i>	<i>-3 709</i>	<i>-3 829</i>	<i>-3 703</i>	<i>-3 983</i>	<i>-4 222</i>	<i>-3 761</i>	<i>-3 841</i>	<i>-4 142</i>	<i>-4 023</i>	<i>-4 261</i>
Machinery and industrial equipment	-1 339	-1 309	-1 423	-1 349	-1 585	-1 410	-1 482	-1 457	-1 497	-1 518
ADP equipment	-618	-664	-625	-589	-564	-592	-560	-511	-544	-586
Telecommunications equipment	-533	-451	-474	-478	-474	-448	-462	-452	-479	-464
Civil aircraft(b)	-64	-307	-72	-430	-464	-153	-209	-500	-180	-382
Industrial transport equipment n.e.s.	-672	-623	-667	-644	-637	-666	-626	-716	-821	-805
Capital goods n.e.s.	-482	-475	-442	-493	-498	-492	-502	-506	-502	-505
<i>Intermediate and other merchandise goods</i>	<i>-7 160</i>	<i>-7 283</i>	<i>-7 791</i>	<i>-7 661</i>	<i>-7 723</i>	<i>-7 929</i>	<i>-8 669</i>	<i>-8 234</i>	<i>-9 060</i>	<i>-8 437</i>
Food and beverages, mainly for industry	-71	-78	-81	-83	-66	-78	-89	-76	-79	-87
Primary industrial supplies n.e.s.(c)	-108	-126	-135	-114	-108	-108	-146	-138	-168	-164
Fuels and lubricants(b)	-2 246	-2 345	-2 633	-2 524	-2 709	-2 796	-3 175	-2 823	-3 616	-2 729
Parts for transport equipment	-728	-722	-745	-768	-733	-765	-776	-763	-776	-808
Parts for ADP equipment	-93	-97	-94	-88	-85	-88	-86	-86	-84	-83
Other parts for capital goods	-961	-984	-960	-1 044	-945	-1 035	-1 080	-1 009	-1 012	-1 052
Organic and inorganic chemicals	-371	-329	-414	-380	-349	-385	-398	-457	-429	-464
Paper and paperboard	-185	-190	-180	-197	-205	-189	-206	-205	-208	-205
Textile yarn and fabrics	-113	-117	-114	-111	-114	-108	-108	-104	-104	-107
Iron and steel	-300	-272	-304	-265	-312	-340	-350	-389	-417	-468
Plastics	-257	-251	-245	-245	-248	-261	-265	-272	-267	-266
Processed industrial supplies n.e.s.	-1 615	-1 665	-1 748	-1 631	-1 735	-1 682	-1 889	-1 798	-1 786	-1 856
Other merchandise goods(b)	-112	-107	-138	-211	-114	-94	-102	-114	-116	-148
<i>Other goods</i>	<i>-790</i>	<i>-488</i>	<i>-915</i>	<i>-880</i>	<i>-763</i>	<i>-882</i>	<i>-948</i>	<i>-874</i>	<i>-1 136</i>	<i>-1 011</i>
Goods for processing(b)	-14	-1	-11	-49	-1	-4	-141	-13	-159	-1
Repairs on goods(b)	-9	-8	-5	-5	-8	-10	-13	-9	-11	-11
Goods procured in ports by carriers(b)	-138	-137	-147	-147	-148	-139	-139	-139	-159	-159
Non-monetary gold(d)	-629	-342	-752	-679	-606	-729	-655	-713	-807	-840

(a) For sign conventions, see paragraph 11 of the Explanatory Notes.

(b) These components are not seasonally adjusted.

(c) In using these seasonally adjusted series, care should be exercised because of the difficulties associated with reliably estimating the seasonal pattern.

(d) From October 1995, this component is not seasonally adjusted.

	Nov 2007	Dec 2007	Jan 2008	Feb 2008	Mar 2008	Apr 2008	May 2008	Jun 2008	Jul 2008	Aug 2008
	\$m	\$m	\$m	\$m	\$m	\$m	\$m	\$m	\$m	\$m
<b>Total goods credits</b>	<b>14 225</b>	<b>14 437</b>	<b>14 704</b>	<b>15 013</b>	<b>15 356</b>	<b>17 248</b>	<b>17 782</b>	<b>18 342</b>	<b>18 860</b>	<b>19 351</b>
<i>Rural goods</i>	2 001	2 061	2 133	2 206	2 262	2 292	2 301	2 299	2 291	2 279
Meat and meat preparations	538	535	534	537	544	555	568	578	586	591
Cereal grains and cereal preparations	295	332	388	455	511	547	563	567	563	553
Wool and sheepskins	252	257	255	245	232	220	212	207	204	203
Other rural(a)	916	937	957	970	975	969	959	947	938	931
<i>Non-rural goods</i>	11 069	11 170	11 324	11 547	11 841	13 708	14 217	14 744	15 223	15 667
Metal ores and minerals(b)	3 114	3 181	3 263	3 349	3 429	4 223	4 326	4 440	4 542	4 663
Coal, coke and briquettes(c)	1 689	1 666	1 660	1 703	1 827	2 829	3 184	3 560	3 913	4 229
Other mineral fuels	1 542	1 571	1 609	1 666	1 734	1 793	1 833	1 853	1 858	1 852
Metals (excl. non-monetary gold)	1 120	1 113	1 114	1 125	1 142	1 165	1 196	1 230	1 266	1 281
Machinery	738	740	741	739	734	729	726	727	731	738
Transport equipment	472	480	486	491	493	497	502	509	516	523
Other manufactures	1 395	1 390	1 395	1 406	1 420	1 432	1 440	1 446	1 449	1 458
Other non-rural (incl. sugar and beverages)	999	1 028	1 056	1 070	1 062	1 040	1 011	978	949	923
<i>Other goods</i>	1 154	1 206	1 247	1 260	1 254	1 248	1 263	1 299	1 346	1 405
Goods for processing	22	24	26	26	25	25	26	28	30	33
Repairs on goods	8	8	8	8	9	10	10	10	10	10
Goods procured in ports by carriers	127	132	136	138	138	138	139	141	142	143
Non-monetary gold	998	1 042	1 077	1 088	1 082	1 076	1 089	1 120	1 164	1 219

(a) For all time periods, estimates for sugar, sugar preparations and honey are included in Other non-rural.

(b) A trend break of \$725m has been applied to metal ores and minerals, and related aggregates in April 2008. This trend break will be reassessed when sufficient observations post April 2008 are available. Recent months should be used with caution.

(c) A trend break of \$708m has been applied to coal, coke and briquettes and related aggregates in April 2008. This trend break will be reassessed when sufficient observations post April 2008 are available. Recent months should be used with caution.

## GOODS DEBITS(a): Trend Estimates

	Nov 2007	Dec 2007	Jan 2008	Feb 2008	Mar 2008	Apr 2008	May 2008	Jun 2008	Jul 2008	Aug 2008
	\$m	\$m	\$m	\$m	\$m	\$m	\$m	\$m	\$m	\$m
<b>Total goods debits</b>	<b>-16 587</b>	<b>-16 884</b>	<b>-17 185</b>	<b>-17 489</b>	<b>-17 794</b>	<b>-18 076</b>	<b>-18 347</b>	<b>-18 604</b>	<b>-18 824</b>	<b>-19 012</b>
<i>Consumption goods</i>	-4 907	-4 980	-5 043	-5 091	-5 119	-5 127	-5 127	-5 125	-5 118	-5 112
Food and beverages, mainly for consumption	-634	-638	-647	-660	-672	-679	-684	-687	-688	-689
Household electrical items	-416	-411	-405	-407	-417	-432	-447	-457	-461	-461
Non-industrial transport equipment	-1 414	-1 458	-1 491	-1 506	-1 501	-1 482	-1 460	-1 440	-1 425	-1 418
Textiles, clothing and footwear	-583	-586	-588	-591	-593	-596	-599	-601	-603	-604
Toys, books and leisure goods	-381	-389	-393	-395	-398	-400	-402	-404	-404	-405
Consumption goods n.e.s.	-1 478	-1 498	-1 518	-1 532	-1 538	-1 538	-1 536	-1 536	-1 536	-1 535
<i>Capital goods</i>	-3 704	-3 780	-3 847	-3 898	-3 938	-3 964	-3 992	-4 033	-4 082	-4 119
Machinery and industrial equipment	-1 324	-1 348	-1 382	-1 417	-1 448	-1 466	-1 476	-1 485	-1 492	-1 502
ADP equipment	-617	-620	-615	-603	-585	-568	-556	-550	-549	-551
Telecommunications equipment	-509	-501	-486	-471	-462	-461	-462	-462	-463	-464
Civil aircraft	-151	-197	-245	-284	-308	-312	-310	-310	-316	-307
Industrial transport equipment n.e.s.	-628	-640	-643	-642	-647	-662	-689	-722	-757	-791
Capital goods n.e.s.	-474	-474	-476	-480	-487	-495	-500	-504	-506	-505
<i>Intermediate and other merchandise goods</i>	-7 257	-7 392	-7 532	-7 698	-7 894	-8 102	-8 302	-8 480	-8 624	-8 742
Food and beverages, mainly for industry	-78	-79	-78	-78	-78	-78	-79	-81	-82	-83
Primary industrial supplies n.e.s.	-126	-124	-121	-118	-118	-124	-133	-144	-154	-164
Fuels and lubricants	-2 293	-2 397	-2 496	-2 612	-2 742	-2 868	-2 975	-3 056	-3 107	-3 139
Parts for transport equipment	-722	-729	-739	-747	-755	-761	-767	-775	-782	-790
Parts for ADP equipment	-95	-93	-92	-90	-88	-87	-86	-85	-84	-84
Other parts for capital goods	-976	-978	-984	-995	-1 007	-1 019	-1 027	-1 032	-1 037	-1 037
Organic and inorganic chemicals	-382	-373	-368	-370	-378	-392	-407	-424	-439	-456
Paper and paperboard	-190	-189	-189	-192	-196	-199	-202	-204	-206	-207
Textile yarn and fabrics	-114	-115	-114	-113	-111	-109	-107	-106	-105	-104
Iron and steel	-283	-282	-285	-294	-310	-333	-361	-390	-417	-443
Plastics	-253	-250	-249	-249	-253	-258	-262	-266	-269	-271
Processed industrial supplies n.e.s.	-1 624	-1 651	-1 678	-1 703	-1 727	-1 753	-1 780	-1 805	-1 826	-1 846
Other merchandise goods	-121	-132	-139	-137	-131	-122	-116	-114	-116	-118
<i>Other goods</i>	-719	-732	-764	-803	-843	-884	-926	-966	-1 000	-1 039
Goods for processing	-6	-9	-12	-21	-33	-47	-60	-69	-73	-72
Repairs on goods	-9	-7	-7	-7	-8	-9	-10	-11	-11	-11
Goods procured in ports by carriers	-137	-141	-144	-144	-143	-143	-144	-147	-150	-153
Non-monetary gold	-567	-574	-601	-631	-658	-684	-712	-740	-767	-802

(a) For sign conventions, see paragraph 11 of the Explanatory Notes.

## SERVICES (a)(b), Summary—Original

							2 MONTHS ENDED AUGUST		Change
	2005–06	2006–07	2007–08	June 2008	July 2008	August 2008	2007	2008	
	\$m	\$m	\$m	\$m	\$m	\$m	\$m	\$m	%
<b>Services credits</b>	<b>41 849</b>	<b>46 181</b>	<b>51 319</b>	<b>4 304</b>	<b>4 798</b>	<b>4 873</b>	<b>8 244</b>	<b>9 671</b>	<b>17.3</b>
Transportation services	8 208	8 617	9 394	799	858	840	1 465	1 698	15.9
Passenger(c)	4 104	4 237	4 100	276	349	331	691	680	-1.6
Freight	608	609	631	57	49	49	102	98	-3.9
Other	3 496	3 771	4 663	466	460	460	672	920	36.9
Travel services	22 624	25 161	28 430	2 288	2 705	2 797	4 642	5 502	18.5
Other services	11 017	12 403	13 495	1 217	1 235	1 236	2 137	2 471	15.6
<b>Services debits</b>	<b>-41 078</b>	<b>-44 428</b>	<b>-49 963</b>	<b>-4 537</b>	<b>-4 643</b>	<b>-4 395</b>	<b>-8 013</b>	<b>-9 038</b>	<b>-12.8</b>
Transportation services	-14 508	-15 360	-16 382	-1 481	-1 530	-1 481	-2 564	-3 011	-17.4
Passenger(c)	-6 284	-6 876	-7 289	-754	-704	-657	-1 154	-1 361	-17.9
Freight	-7 776	-8 036	-8 600	-679	-786	-784	-1 330	-1 570	-18.0
Other	-448	-448	-493	-48	-40	-40	-80	-80	—
Travel services	-15 090	-15 934	-18 030	-1 597	-1 646	-1 439	-2 995	-3 085	-3.0
Other services	-11 480	-13 134	-15 551	-1 459	-1 467	-1 475	-2 454	-2 942	-19.9
<b>Memorandum items:</b>									
Tourism related service credits(d)	26 728	29 398	32 530	2 564	3 054	3 128	5 333	6 182	15.9
Tourism related service debits(d)	-21 374	-22 810	-25 319	-2 351	-2 350	-2 096	-4 149	-4 446	-7.2

— nil or rounded to zero (including null cells)

(a) For sign conventions, see paragraph 11 of the Explanatory Notes.

(b) For more detailed trade in services components, see table 11.

(c) Passenger services includes agency fees and commission receipts for air transport.

(d) For a more detailed explanation of tourism related services, see paragraphs 18 and 19 of the Explanatory Notes.

## SERVICES(a), Summary: Seasonally Adjusted and Trend Estimates

	Nov 2007	Dec 2007	Jan 2008	Feb 2008	Mar 2008	Apr 2008	May 2008	Jun 2008	Jul 2008	Aug 2008
	\$m	\$m	\$m	\$m	\$m	\$m	\$m	\$m	\$m	\$m

## SEASONALLY ADJUSTED

<b>Services credits</b>	<b>4 126</b>	<b>4 141</b>	<b>4 285</b>	<b>4 351</b>	<b>4 403</b>	<b>4 475</b>	<b>4 607</b>	<b>4 649</b>	<b>4 717</b>	<b>4 735</b>
Transportation services	711	715	831	838	839	859	854	850	840	836
Passenger(b)	334	340	341	346	344	349	341	335	338	333
Freight(c)	54	53	51	51	51	53	53	55	51	50
Other(c)	322	322	438	441	444	457	460	460	452	454
Travel services	2 319	2 319	2 340	2 391	2 440	2 420	2 552	2 591	2 641	2 652
Other services(c)	1 097	1 106	1 114	1 122	1 124	1 196	1 201	1 209	1 235	1 246
<b>Services debits</b>	<b>-4 033</b>	<b>-4 083</b>	<b>-4 183</b>	<b>-4 168</b>	<b>-4 231</b>	<b>-4 366</b>	<b>-4 441</b>	<b>-4 463</b>	<b>-4 495</b>	<b>-4 485</b>
Transportation services	-1 312	-1 342	-1 394	-1 366	-1 401	-1 417	-1 458	-1 491	-1 520	-1 505
Passenger(b)	-582	-592	-595	-603	-619	-636	-653	-693	-675	-662
Freight	-689	-712	-759	-722	-742	-737	-760	-750	-804	-803
Other(d)	-41	-38	-40	-40	-41	-45	-45	-48	-40	-40
Travel services	-1 486	-1 505	-1 528	-1 526	-1 549	-1 509	-1 530	-1 528	-1 502	-1 490
Other services(c)	-1 235	-1 235	-1 260	-1 277	-1 281	-1 440	-1 452	-1 443	-1 473	-1 489
<b>Memorandum items:</b>										
Tourism related service credits(e)	2 653	2 659	2 681	2 737	2 784	2 768	2 893	2 926	2 979	2 985
Tourism related service debits(e)	-2 068	-2 097	-2 124	-2 129	-2 168	-2 145	-2 183	-2 222	-2 178	-2 152

## TREND ESTIMATES

<b>Services credits</b>	<b>4 121</b>	<b>4 146</b>	<b>4 298</b>	<b>4 351</b>	<b>4 419</b>	<b>4 495</b>	<b>4 570</b>	<b>4 639</b>	<b>4 698</b>	<b>4 744</b>
Transportation services	717	715	833	838	844	848	849	848	846	843
Passenger(b)	339	340	342	344	344	343	341	339	337	334
Freight	53	53	52	52	52	52	52	52	52	52
Other(f)	325	323	439	443	448	452	455	457	457	457
Travel services	2 309	2 328	2 352	2 384	2 426	2 475	2 527	2 577	2 620	2 655
Other services	1 095	1 103	1 114	1 129	1 149	1 172	1 194	1 215	1 232	1 246
<b>Services debits</b>	<b>-4 062</b>	<b>-4 097</b>	<b>-4 143</b>	<b>-4 203</b>	<b>-4 272</b>	<b>-4 340</b>	<b>-4 400</b>	<b>-4 450</b>	<b>-4 490</b>	<b>-4 520</b>
Transportation services	-1 333	-1 348	-1 363	-1 382	-1 405	-1 430	-1 455	-1 479	-1 501	-1 519
Passenger(b)	-587	-590	-596	-607	-623	-639	-654	-666	-675	-681
Freight	-707	-718	-727	-733	-740	-747	-757	-769	-782	-796
Other	-39	-39	-40	-41	-42	-43	-44	-44	-43	-43
Travel services	-1 496	-1 510	-1 521	-1 528	-1 531	-1 529	-1 523	-1 516	-1 509	-1 502
Other services	-1 233	-1 239	-1 259	-1 293	-1 336	-1 381	-1 421	-1 454	-1 480	-1 499
<b>Memorandum items:</b>										
Tourism related service credits(e)	2 647	2 668	2 693	2 727	2 770	2 819	2 869	2 916	2 957	2 989
Tourism related service debits(e)	-2 083	-2 100	-2 117	-2 136	-2 154	-2 168	-2 177	-2 183	-2 184	-2 183

- (a) For sign conventions, see paragraph 11 of the Explanatory Notes.
- (b) Passenger services includes agency fees and commission receipts for air transport.
- (c) In using these seasonally adjusted series, care should be exercised because of the difficulties associated with reliably estimating the seasonal pattern.

- (d) This component is not seasonally adjusted.
- (e) For a more detailed explanation of tourism related services, see paragraphs 18 and 19 of the Explanatory Notes.
- (f) A trend break has been applied to Other transportation credits and related aggregates in January 2008.

	CREDITS				DEBITS			
	Sep Qtr	Dec Qtr	Mar Qtr	Jun Qtr	Sep Qtr	Dec Qtr	Mar Qtr	Jun Qtr
	2007	2007	2008	2008	2007	2007	2008	2008
	\$m	\$m	\$m	\$m	\$m	\$m	\$m	\$m
<b>Services</b>	<b>12 214</b>	<b>12 544</b>	<b>13 270</b>	<b>13 291</b>	<b>-12 316</b>	<b>-12 392</b>	<b>-12 222</b>	<b>-13 033</b>
Transportation services	2 167	2 193	2 583	2 451	-3 959	-4 138	-3 988	-4 297
Passenger(c)	1 002	1 056	1 152	890	-1 841	-1 762	-1 681	-2 005
Freight	154	168	144	165	-2 004	-2 256	-2 186	-2 154
Other	1 011	969	1 287	1 396	-114	-120	-121	-138
Travel services	6 842	6 935	7 466	7 187	-4 668	-4 451	-4 475	-4 436
Business	674	644	705	687	-708	-688	-910	-653
Personal	6 168	6 291	6 761	6 500	-3 960	-3 763	-3 565	-3 783
Education-related	3 400	3 008	3 441	3 877	-260	-176	-209	-201
Other	2 768	3 283	3 320	2 623	-3 700	-3 587	-3 356	-3 582
Communication services(d)	190	167	173	216	-273	-218	-247	-244
Construction services	30	41	36	8	—	—	—	—
Insurance services	181	181	181	181	-233	-233	-233	-233
Financial services	259	259	259	259	-155	-155	-155	-155
Computer and information services	383	407	332	423	-343	-412	-307	-382
Royalties and license fees	184	177	180	211	-873	-865	-907	-888
Other business services	1 632	1 817	1 627	1 943	-1 350	-1 460	-1 314	-1 876
Merchanting and other trade-related	183	253	214	320	-57	-68	-54	-53
Operational leasing	24	20	19	23	-224	-208	-188	-218
Miscellaneous business, professional and technical	1 425	1 544	1 394	1 600	-1 069	-1 184	-1 072	-1 605
Legal, accounting, management consulting and public relations	302	288	277	286	-106	-108	-130	-162
Advertising, market research and public opinion polling	61	87	74	70	-34	-51	-40	-66
Research and development	148	158	118	129	-38	-35	-35	-38
Architectural, engineering and other technical services	355	398	430	492	-372	-387	-266	-442
Agriculture, mining and on-site processing	94	103	84	100	-120	-115	-172	-387
Services between affiliated enterprises n.i.e.	320	339	258	327	-222	-236	-230	-257
Other	145	171	153	196	-177	-252	-199	-253
Personal, cultural, and recreational services	132	166	217	195	-270	-247	-393	-282
Audiovisual and related services	33	40	89	52	-246	-206	-310	-250
Personal, cultural and recreational services	99	126	128	143	-24	-41	-83	-32
Government services n.i.e.	214	201	216	217	-192	-213	-203	-240
<b>Memorandum items:</b>								
Tourism related services(e)	7 844	7 991	8 618	8 077	-6 509	-6 213	-6 156	-6 441

— nil or rounded to zero (including null cells)

(a) For sign conventions, see paragraph 11 of the Explanatory Notes.

(b) For more information see paragraphs 15 and 16 of the Explanatory Notes.

(c) Passenger services includes agency fees and commission receipts for air transport.

(d) Communications services includes other services n.i.e.

(e) For a more detailed explanation of tourism related services, see paragraphs 18 and 19 of the Explanatory Notes.

					Per cent of total merchandise exports(b)	2 MONTHS ENDED AUGUST .....				
					June	July	August		2007	2008
					\$m	\$m	\$m	%	\$m	\$m
MAJOR COMMODITIES (c)										
011	Meat of bovine animals	401	439	420	2.1	721	859			
041	Wheat and meslin	320	301	379	1.9	328	680			
268	Wool and other animal hair	156	176	109	0.5	297	285			
281	Iron ore and concentrates	2 333	2 861	2 967	14.7	2 791	5 828			
283	Copper ores and concentrates	352	303	394	1.9	778	697			
285	Aluminium ores and concentrates	503	524	541	2.7	1 013	1 065			
321	Coal, not agglomerated	3 924	3 612	4 585	22.7	3 338	8 197			
333	Crude petroleum oils	1 032	1 088	1 046	5.2	1 515	2 134			
334	Refine petroleum oils	273	198	307	1.5	575	505			
343	Natural gas	632	686	642	3.2	862	1 329			
682	Copper	343	312	331	1.6	483	643			
684	Aluminium	471	448	501	2.5	1 082	949			
781	Motor vehicles for transport of people	288	305	372	1.8	518	677			
971	Gold, non-monetary	870	1 422	1 263	6.2	2 109	2 685			

## SECTION AND DIVISION OF THE SITC

0	Food and live animals						
00	Live animals other than fish, crustaceans, molluscs and aquatic invertebrates	71	87	106	0.5	178	193
01	Meat and meat preparations	551	575	582	2.9	1 032	1 157
02	Dairy products and birds' eggs	219	137	176	0.9	351	313
03	Fish (not marine mammals), crustaceans, molluscs and aquatic invertebrates, and preparations thereof	74	62	172	0.8	208	233
04	Cereals and cereal preparations	505	488	516	2.5	579	1 003
05	Vegetables and fruit	116	121	123	0.6	248	244
06	Sugars, sugar preparations and honey	16	17	30	0.1	47	47
07	Coffee, tea, cocoa, spices, and manufactures thereof	20	19	23	0.1	48	42
08	Feeding stuff for animals (excl. unmilled cereals)	72	90	92	0.5	115	182
09	Miscellaneous edible products and preparations	54	50	50	0.2	76	100
	<i>Total Food and live animals</i>	<i>1 698</i>	<i>1 645</i>	<i>1 869</i>	<i>9.2</i>	<i>2 881</i>	<i>3 515</i>
1	Beverages and tobacco						
11	Beverages	196	224	249	1.2	563	473
12	Tobacco and tobacco manufactures	7	8	12	0.1	28	19
	<i>Total Beverages and tobacco</i>	<i>204</i>	<i>232</i>	<i>261</i>	<i>1.3</i>	<i>590</i>	<i>493</i>
2	Crude materials, inedible, except fuels						
21	Hides, skins and furskins, raw	60	55	61	0.3	114	116
22	Oil-seeds and oleaginous fruits	8	22	9	—	36	31
23	Crude rubber (incl. synthetic and reclaimed)	1	1	—	—	1	1
24	Cork and wood	127	103	142	0.7	211	245
25	Pulp and waste paper	24	24	27	0.1	38	51
26	Textile fibres and their wastes (not manufactured into yarn or fabric)	208	236	157	0.8	407	393
27	Crude fertilizers (excl. those of Division 56) and crude minerals (excl. coal, petroleum and precious stones)	35	27	23	0.1	81	50
28	Metalliferous ores and metal scrap	4 251	4 373	4 729	23.4	6 236	9 101
29	Crude animal and vegetable materials, n.e.s.	22	25	21	0.1	36	46
	<i>Total Crude materials, inedible, except fuels</i>	<i>4 737</i>	<i>4 866</i>	<i>5 169</i>	<i>25.6</i>	<i>7 160</i>	<i>10 035</i>
3	Mineral fuels, lubricants and related materials						
32	Coal, coke and briquettes	3 955	3 634	4 594	22.7	3 352	8 228
33	Petroleum, petroleum products and related materials	1 308	1 288	1 356	6.7	2 092	2 644
34	Gas, natural and manufactured	714	815	729	3.6	1 095	1 544
	<i>Total Mineral fuels, lubricants and related materials</i>	<i>5 978</i>	<i>5 737</i>	<i>6 679</i>	<i>33.0</i>	<i>6 540</i>	<i>12 416</i>

— nil or rounded to zero (including null cells)

(a) Some SITC sections and divisions exclude commodities subject to a confidentiality restriction. These are included in Division 98. For more information see paragraph 17 of the Explanatory Notes.

(b) Per cent of total merchandise is calculated for the most recent month.

(c) The 'Major commodities' section lists commodities at the SITC Rev 4 3-digit level which are the most significant (by value) or are of particular interest. Abbreviated descriptors have been used. The list of 'Major commodities' is reviewed annually.

					2 MONTHS ENDED AUGUST		
					Per cent of total merchandise exports(b)	2007	2008
					June	July	August
					\$m	\$m	\$m
							%
					\$m	\$m	\$m
SECTION AND DIVISION OF THE SITC							
4	Animal and vegetable oils, fats and waxes						
41	Animal oils and fats	27	31	26	0.1	45	57
42	Fixed vegetable fats and oils, crude, refined or fractionated	7	18	15	0.1	12	32
43	Fats and oils (processed), waxes and inedible mixtures or preparations, of animal or vegetable origin, n.e.s.	1	1	1	—	3	2
	Total Animal and vegetable oils, fats and waxes	36	50	41	0.2	59	91
5	Chemicals and related products, nes						
51	Organic chemicals	15	14	18	0.1	27	31
52	Inorganic chemicals	78	38	38	0.2	145	76
53	Dyeing, tanning and colouring materials	42	34	45	0.2	102	79
54	Medicinal and pharmaceutical products	334	381	334	1.7	752	715
55	Essential oils and resinoids and perfume materials; toilet, polishing and cleansing preparations	46	50	46	0.2	93	96
56	Fertilisers (excl. crude)	9	91	175	0.9	54	266
57	Plastics in primary forms	31	26	31	0.2	63	57
58	Plastics in non-primary forms	41	29	32	0.2	66	61
59	Chemical materials and products, n.e.s.	80	85	84	0.4	150	169
	Total Chemicals and related products, n.e.s.	676	748	802	4.0	1 452	1 550
6	Manufactured goods classified chiefly by material						
61	Leather, leather manufactures, and dressed furskins, n.e.s.	24	24	28	0.1	66	52
62	Rubber manufactures, n.e.s.	19	22	21	0.1	42	43
63	Cork and wood manufactures (excl. furniture)	13	14	14	0.1	26	28
64	Paper, paperboard, and articles of paper pulp, of paper or of paperboard	63	49	59	0.3	120	108
65	Textile yarn, fabrics, made-up articles n.e.s., and related products	34	33	31	0.2	77	64
66	Non-metallic mineral manufactures, n.e.s.	59	46	59	0.3	124	104
67	Iron and steel	131	205	145	0.7	193	350
68	Non-ferrous metals	1 173	995	1 228	6.1	2 284	2 223
69	Manufactures of metals, n.e.s.	90	99	99	0.5	180	197
	Total Manufactured goods classified chiefly by material	1 606	1 486	1 684	8.3	3 113	3 170
7	Machinery and transport equipment						
71	Power generating machinery and equipment	82	91	90	0.4	196	181
72	Machinery specialized for particular industries	131	144	183	0.9	302	327
73	Metal working machinery	16	14	17	0.1	35	31
74	General industrial machinery and equipment, n.e.s. and machine parts, n.e.s.	142	156	164	0.8	300	320
75	Office machines and automatic data processing machines	82	101	97	0.5	196	198
76	Telecommunications and sound recording and reproducing apparatus and equipment	69	74	108	0.5	152	182
77	Electrical machinery, apparatus and appliances, parts (incl. non-electrical counterparts of electrical domestic equip)	158	152	158	0.8	319	310
78	Road vehicles (incl. air-cushion vehicles)	387	414	458	2.3	755	872
79	Transport equipment (excl. road vehicles)	109	123	108	0.5	172	231
	Total Machinery and transport equipment	1 176	1 270	1 382	6.8	2 425	2 652

— nil or rounded to zero (including null cells)

(b) Per cent of total merchandise is calculated for the most recent month.

(a) Some SITC sections and divisions exclude commodities subject to a confidentiality restriction. These are included in Division 98. For more information see paragraph 17 of the Explanatory Notes.

					2 MONTHS ENDED AUGUST.....		
					Per cent of total merchandise exports(b)	2007	2008
					June	July	August
					\$m	\$m	\$m
							%
							\$m
							\$m
SECTION AND DIVISION OF THE SITC							
8	Miscellaneous manufactured articles						
81	Prefabricated buildings and sanitary, plumbing, heating and lighting fixtures and fittings, n.e.s.	13	11	20	0.1	30	31
82	Furniture, parts thereof; bedding, mattresses, mattress supports, cushions and similar stuffed furnishings	13	9	10	—	17	19
83	Travel goods, handbags and similar containers	3	3	2	—	4	5
84	Articles of apparel and clothing accessories	16	22	24	0.1	45	47
85	Footwear	3	4	5	—	9	8
87	Professional, scientific and controlling instruments and apparatus, n.e.s.	161	169	161	0.8	310	330
88	Photographic apparatus, equipment and supplies and optical goods, n.e.s.; watches and clocks	24	25	28	0.1	55	53
89	Miscellaneous manufactured articles, n.e.s.	190	198	185	0.9	416	384
	<i>Total Miscellaneous manufactured articles</i>	422	441	436	2.2	886	876
9	Commodities and transactions not classified elsewhere in the SITC						
93	Special transactions and commodities not classified according to kind	89	104	123	0.6	213	226
95	Gold coin whether or not legal tender, and other coin being legal tender	12	13	18	0.1	23	31
96	Coin (excl. gold coin), not being legal tender	—	—	—	—	—	—
97	Gold, non-monetary (excl. gold ores and concentrates)	870	1 422	1 263	6.2	2 109	2 685
98	Combined confidential items excl. some of SITC 280 (exports only) and some of SITCs 510 and 520 (imports only)	539	351	497	2.5	1 595	848
	<i>Total Commodities and transactions not classified elsewhere in the SITC</i>	1 510	1 890	1 901	9.4	3 941	3 791
<b>Total merchandise exports</b>		<b>18 041</b>	<b>18 365</b>	<b>20 224</b>	<b>100.0</b>	<b>29 048</b>	<b>38 589</b>
Balance of Payments Adjustments		511	246	142	. .	161	388
Goods credits (exports) on a Balance of Payments Basis		18 552	18 611	20 366	. .	29 209	38 977

.. not applicable

— nil or rounded to zero (including null cells)

(a) Some SITC sections and divisions exclude commodities subject to a confidentiality restriction. These are included in Division 98. For more information see paragraph 17 of the Explanatory Notes.

(b) Per cent of total merchandise is calculated for the most recent month.

				Per cent of total merchandise imports(b)	2 MONTHS ENDED AUGUST	
	June	July	August		2007	2008
	\$m	\$m	\$m	%	\$m	\$m
MAJOR COMMODITIES(c)						
333 Crude petroleum oils	1 558	2 025	1 726	9.4	2 535	3 750
334 Refined petroleum oils	1 255	1 486	942	5.1	1 268	2 428
542 Medicaments	555	626	570	3.1	1 153	1 196
641 Paper and paperboard	161	193	181	1.0	384	374
723 Civil engineering and contractors' plant and equipment	303	353	357	1.9	565	710
751 Office machines	156	174	145	0.8	342	319
752 Automatic data processing machines	482	447	445	2.4	941	892
761 Televisions	331	327	226	1.2	525	552
764 Telecommunications equipment	571	538	495	2.7	1 102	1 032
781 Motor vehicles for the transport of people	1 289	1 276	1 257	6.8	2 202	2 533
782 Motor vehicles for the transport of goods	584	595	552	3.0	895	1 147
784 Parts and accessories of motor vehicles	236	245	234	1.3	439	479
792 Aircraft and associated equipment	625	487	596	3.2	514	1 082
971 Gold, non-monetary	616	909	747	4.0	1 453	1 655

## SECTION AND DIVISION OF THE SITC

0	Food and live animals					
00	Live animals other than fish, crustaceans, molluscs and aquatic invertebrates	16	8	10	0.1	14
01	Meat and meat preparations	41	46	33	0.2	60
02	Dairy products and birds' eggs	48	49	45	0.2	71
03	Fish (not marine mammals), crustaceans, molluscs and aquatic invertebrates, and preparations thereof	87	98	89	0.5	178
04	Cereals and cereal preparations	60	67	74	0.4	114
05	Vegetables and fruit	110	125	125	0.7	241
06	Sugars, sugar preparations and honey	18	19	19	0.1	39
07	Coffee, tea, cocoa, spices, and manufactures thereof	74	85	98	0.5	180
08	Feeding stuff for animals (excl. unmilled cereals)	33	51	40	0.2	85
09	Miscellaneous edible products and preparations	105	118	101	0.5	238
	<i>Total Food and live animals</i>	<i>592</i>	<i>667</i>	<i>634</i>	<i>3.4</i>	<i>1 220</i>
1	Beverages and tobacco					
11	Beverages	96	95	108	0.6	215
12	Tobacco and tobacco manufactures	15	21	15	0.1	35
	<i>Total Beverages and tobacco</i>	<i>112</i>	<i>116</i>	<i>123</i>	<i>0.7</i>	<i>250</i>
2	Crude materials, inedible, except fuels					
21	Hides, skins and furskins, raw	—	—	—	—	—
22	Oil seeds and oleaginous fruits	4	5	5	—	11
23	Crude rubber (incl. synthetic and reclaimed)	18	18	22	0.1	29
24	Cork and wood	48	53	47	0.3	104
25	Pulp and waste paper	18	27	33	0.2	47
26	Textile fibres and their wastes (not manufactured into yarn or fabric)	11	12	13	0.1	25
27	Crude fertilisers (excl. those of Division 56) and crude minerals (excl. coal, petroleum and precious stones)	30	69	56	0.3	39
28	Metalliferous ores and metal scrap	42	73	71	0.4	117
29	Crude animal and vegetable materials, n.e.s.	23	21	20	0.1	41
	<i>Total Crude materials, inedible, except fuels</i>	<i>194</i>	<i>277</i>	<i>268</i>	<i>1.4</i>	<i>413</i>
3	Mineral fuels, lubricants and related materials					
32	Coal, coke and briquettes	3	3	1	—	3
33	Petroleum, petroleum products and related materials	2 861	3 563	2 724	14.8	3 864
34	Gas, natural and manufactured	49	148	107	0.6	199
	<i>Total Mineral fuels, lubricants and related materials</i>	<i>2 914</i>	<i>3 714</i>	<i>2 831</i>	<i>15.3</i>	<i>4 066</i>

— nil or rounded to zero (including null cells)

(a) Some SITC sections and divisions exclude commodities subject to a confidentiality restriction. These are included in Division 98. For more information see paragraph 17 of the Explanatory Notes.

(b) Per cent of total merchandise imports is calculated for the most recent month.

(c) The 'Major commodities' section lists commodities at the SITC Rev 4 3-digit level which are the most significant (by value) or are of particular interest. Abbreviated descriptors have been used. The list of 'Major commodities' is reviewed annually.

					2 MONTHS ENDED AUGUST .....		
					Per cent of total merchandise imports(b)		
	June	July	August		2007	2008	
	\$m	\$m	\$m	%	\$m	\$m	
SECTION AND DIVISION OF THE SITC							
4	Animal and vegetable oils, fats and waxes						
41	Animal oils and fats	1	3	2	—	5	5
42	Fixed vegetable fats and oils, crude, refined or fractionated	18	38	49	0.3	83	87
43	Fats and oils (processed), waxes and inedible mixtures or preparations, of animal or vegetable origin, n.e.s.	6	6	5	—	9	11
	<i>Total Animal and vegetable oils, fats and waxes</i>	26	47	57	0.3	97	103
5	Chemicals and related products, n.e.s.						
51	Organic chemicals	301	278	285	1.5	612	563
52	Inorganic chemicals	118	152	208	1.1	186	360
53	Dyeing, tanning and colouring materials	49	55	59	0.3	103	114
54	Medicinal and pharmaceutical products	677	755	686	3.7	1 416	1 441
55	Essential oils and resinoids and perfume materials; toilet, polishing and cleansing preparations	122	132	135	0.7	271	267
56	Fertilisers (excl. crude)	156	155	179	1.0	125	334
57	Plastics in primary forms	150	155	146	0.8	291	300
58	Plastics in non-primary forms	99	112	117	0.6	213	229
59	Chemical materials and products, n.e.s.	157	170	166	0.9	308	336
	<i>Total Chemicals and related products, n.e.s.</i>	1 829	1 964	1 980	10.7	3 524	3 945
6	Manufactured goods classified chiefly by material						
61	Leather, leather manufactures, and dressed furskins, n.e.s.	16	21	14	0.1	28	35
62	Rubber manufactures, n.e.s.	206	225	210	1.1	424	434
63	Cork and wood manufactures (excl. furniture)	50	55	53	0.3	105	108
64	Paper, paperboard, and articles of paper pulp, of paper or of paperboard	213	258	242	1.3	510	499
65	Textile yarn, fabrics, made-up articles, n.e.s., and related products	187	201	212	1.1	421	412
66	Non-metallic mineral manufactures, n.e.s.	196	216	217	1.2	394	432
67	Iron and steel	370	430	489	2.6	653	918
68	Non-ferrous metals	229	172	148	0.8	257	320
69	Manufactures of metals, n.e.s.	413	451	469	2.5	851	920
	<i>Total Manufactured goods classified chiefly by material</i>	1 879	2 028	2 051	11.1	3 645	4 080
7	Machinery and transport equipment						
71	Power generating machinery and equipment	374	430	475	2.6	798	905
72	Machinery specialised for particular industries	632	701	729	4.0	1 241	1 430
73	Metal working machinery	59	71	62	0.3	125	132
74	General industrial machinery and equipment, n.e.s. and machine parts, n.e.s.	745	864	904	4.9	1 578	1 768
75	Office machines and automatic data processing machines	741	714	683	3.7	1 510	1 396
76	Telecommunications and sound recording and reproducing apparatus and equipment	989	958	795	4.3	1 798	1 753
77	Electrical machinery, apparatus, appliances, parts (incl. non-elec. counterparts of electrical domestic equip)	777	837	811	4.4	1 556	1 649
78	Road vehicles (incl. air-cushion vehicles)	2 280	2 324	2 243	12.2	3 882	4 567
79	Transport equipment (excl. road vehicles)	1 337	658	732	4.0	648	1 390
	<i>Total Machinery and transport equipment</i>	7 934	7 557	7 434	40.3	13 135	14 991

— nil or rounded to zero (including null cells)

(b) Per cent of total merchandise imports is calculated for the most recent month.

(a) Some SITC sections and divisions exclude commodities subject to a confidentiality restriction. These are included in Division 98. For more information see paragraph 17 of the Explanatory Notes.

					2 MONTHS ENDED AUGUST .....		
					Per cent of total merchandise imports(b)	2007	2008
					June	July	August
					\$m	\$m	\$m
							%
					\$m	\$m	\$m
SECTION AND DIVISION OF THE SITC							
8	Miscellaneous manufactured articles						
81	Prefabricated buildings; sanitary, plumbing, heating and lighting fixtures and fittings, n.e.s.						
	51	59	73	0.4	112	132	
82	Furniture, parts thereof; bedding, mattresses, mattress supports, cushions and similar stuffed furnishings						
	192	216	227	1.2	434	443	
83	Travel goods, handbags and similar containers						
	44	62	60	0.3	122	122	
84	Articles of apparel and clothing accessories						
	330	418	430	2.3	828	848	
85	Footwear						
	78	121	119	0.6	234	240	
87	Professional, scientific and controlling instruments and apparatus, n.e.s.						
	408	404	396	2.1	722	800	
88	Photographic apparatus, equipment and supplies and optical goods, n.e.s.; watches and clocks						
	109	123	110	0.6	233	233	
89	Miscellaneous manufactured articles, n.e.s.						
	773	863	849	4.6	1 552	1 712	
	1 985	2 266	2 265	12.3	4 236	4 531	
	Total Miscellaneous manufactured articles						
9	Commodities and transactions not classified elsewhere in the SITC						
93	Special transactions and commodities not classified according to kind						
	4	4	4	—	5	7	
95	Gold coin whether or not legal tender, and other coin being legal tender						
	—	—	1	—	—	1	
96	Coin (excl. gold coin), not being legal tender						
	—	—	—	—	—	—	
97	Gold, non-monetary (excl. gold ores and concentrates)						
	616	909	747	4.0	1 453	1 655	
98	Combined confidential items excl some of SITC 280 (exports only) and some of SITCs 510 and 520 (imports only)						
	34	53	61	0.3	69	114	
	654	966	812	4.4	1 527	1 778	
	Total Commodities and transactions not classified elsewhere in the SITC						
	18 119	19 603	18 455	100.0	32 114	38 058	
	Total merchandise imports						
	18 119	19 603	18 455	100.0	32 114	38 058	
	Balance of Payments Adjustment						
	-284	88	325	. .	473	413	
	Goods Debits (imports) on a Balance of Payments Basis						
	17 835	19 691	18 780	. .	32 587	38 471	

.. not applicable

— nil or rounded to zero (including null cells)

(a) Some SITC sections and divisions exclude commodities subject to a confidentiality restriction. These are included in Division 98. For more information see paragraph 17 of the Explanatory Notes.

(b) Per cent of total merchandise imports is calculated for the most recent month.

	EXPORTS				IMPORTS				BALANCE OF MERCHANDISE TRADE	
	2007-08	August 2008	2 Months Ended August 2007	2 Months Ended August 2008	2007-08	August 2008	2 Months Ended August 2007	2 Months Ended August 2008	2007-08	2 Months Ended August 2008
	\$m	\$m	\$m	\$m	\$m	\$m	\$m	\$m		
Belgium	1 328	246	228	356	1 728	194	266	353	-401	3
Brazil	938	263	164	407	1 041	190	159	316	-103	90
Canada	1 623	152	259	266	2 188	232	337	478	-566	-212
China	26 927	3 006	3 782	5 938	30 995	2 890	4 963	5 711	-4 068	227
Denmark	177	14	27	27	895	82	143	186	-718	-159
Egypt(b)	310	48	62	74	17	2	3	3	292	71
Fiji	379	34	65	68	122	13	21	26	257	42
Finland	1 146	78	228	124	945	104	157	193	201	-69
France	1 500	114	375	235	4 989	600	953	1 153	-3 488	-918
Germany	1 450	139	208	311	10 576	1 088	1 711	2 015	-9 126	-1 704
Hong Kong (Sar of China)	2 838	289	446	489	1 380	126	257	249	1 458	240
India	9 329	1 720	1 759	2 709	1 606	143	269	309	7 724	2 400
Indonesia	3 970	438	674	829	4 538	551	798	984	-568	-155
Iran	164	31	25	37	54	4	6	22	110	15
Iraq	94	1	3	60	23	—	—	—	71	60
Ireland	241	14	37	27	2 006	132	344	344	-1 764	-316
Israel	254	7	25	21	685	78	90	133	-431	-113
Italy	1 456	130	262	300	4 895	487	807	1 003	-3 439	-702
Japan	34 936	4 498	5 644	8 708	19 681	1 505	2 699	3 284	15 255	5 424
Korea, Republic of	14 250	1 309	2 232	2 628	6 165	545	993	1 094	8 086	1 534
Kuwait	577	55	101	91	363	—	78	58	213	33
Malaysia	3 425	304	549	705	8 142	581	1 289	1 668	-4 717	-963
Mexico	551	49	128	96	1 233	87	186	190	-682	-95
Netherlands	2 863	295	426	508	1 555	145	232	302	1 309	205
New Zealand	9 434	812	1 701	1 585	7 042	695	1 079	1 315	2 391	269
Pakistan	490	70	76	80	154	12	24	24	336	56
Papua New Guinea	1 616	186	289	286	2 747	140	484	465	-1 131	-179
Philippines	1 280	190	225	265	763	72	150	135	517	130
Saudi Arabia	2 247	146	318	327	908	160	189	334	1 339	-7
Singapore	5 323	515	706	971	13 702	954	1 528	2 492	-8 379	-1 520
South Africa	2 408	239	481	452	1 496	132	259	268	911	184
Spain	902	57	156	100	1 996	131	305	308	-1 094	-208
Sweden	445	136	78	196	2 461	215	392	427	-2 015	-231
Switzerland	944	15	504	38	2 129	216	371	403	-1 186	-365
Taiwan	6 460	834	1 070	1 441	4 127	322	729	702	2 333	739
Thailand	4 643	435	781	974	8 805	712	1 216	1 726	-4 162	-752
Turkey	655	166	140	224	404	37	65	72	251	152
United Arab Emirates	3 133	417	866	689	2 499	205	469	414	633	276
United Kingdom	8 309	604	740	1 798	8 499	1 008	2 202	1 515	-189	283
United States of America	10 604	1 119	1 688	2 240	24 326	2 025	3 831	4 276	-13 722	-2 036
Viet Nam	1 814	80	188	165	5 132	491	672	1 055	-3 318	-889
Other Countries	9 310	970	1 330	1 748	9 222	1 150	1 391	2 053	88	-305
<b>Total</b>	<b>180 744</b>	<b>20 224</b>	<b>29 048</b>	<b>38 589</b>	<b>202 236</b>	<b>18 455</b>	<b>32 114</b>	<b>38 058</b>	<b>-21 491</b>	<b>532</b>
APEC	130 887	14 379	20 517	27 872	143 798	12 392	21 595	26 576	-12 911	1 296
ASEAN	20 580	1 976	3 153	3 933	42 207	3 559	5 868	8 471	-21 627	-4 539
Developing Countries	95 168	10 936	15 151	20 211	97 752	8 813	14 911	18 885	-2 584	1 326
Least Developed Countries	1 638	174	251	285	243	18	38	38	1 395	247
European Union(c)	20 470	1 889	2 845	4 121	43 227	4 453	7 949	8 317	-22 757	-4 196
OECD	93 398	9 979	15 126	19 846	107 367	9 833	17 641	19 528	-13 970	318

— nil or rounded to zero (including null cells)

(a) See Time series spreadsheets for details of all countries.

(b) Exports of Alumina to Egypt are excluded from country total and included in the 'Other Countries' category.

(c) The European Union includes 27 member countries.

	2007-08	August 2008	2 MONTHS ENDED AUGUST	
			2007	2008
	\$m	\$m	\$m	\$m
EXPORTS (a)				
New South Wales	30 047	3 122	4 969	6 068
Victoria	20 533	1 630	3 486	3 441
Queensland	35 319	5 326	5 563	9 519
South Australia	10 342	1 100	1 733	1 957
Western Australia	68 766	7 427	10 729	14 577
Tasmania	3 644	328	658	618
Northern Territory	4 544	581	618	1 009
Australian Capital Territory	4	1	2	5
State not available for publication(b)	895	73	124	156
Re-exports	6 650	635	1 165	1 240
<b>Total exports</b>	<b>180 744</b>	<b>20 224</b>	<b>29 048</b>	<b>38 589</b>
IMPORTS				
New South Wales	75 909	6 424	12 298	13 373
Victoria	56 053	5 205	8 909	10 405
Queensland	32 372	3 070	4 931	6 387
South Australia	7 340	591	1 084	1 294
Western Australia	27 273	2 755	4 407	5 700
Tasmania	692	105	96	204
Northern Territory	2 581	304	386	693
Australian Capital Territory	14	—	2	1
<b>Total imports</b>	<b>202 236</b>	<b>18 455</b>	<b>32 114</b>	<b>38 058</b>

— nil or rounded to zero (including null cells)

(a) State in which the final stage of production or manufacture occurs.

(b) Exports of Alumina to Bahrain, Egypt and Iceland are excluded from the state totals and included in 'State not available for publication' category.

## PERIOD AVERAGE EXCHANGE RATES(a): Per Australian dollar

<i>Period</i>	<i>United States dollar</i>	<i>UK pound sterling</i>	<i>Euro</i>	<i>Japanese yen</i>	<i>Trade-weighted index of value of the A\$(b)</i>
FINANCIAL YEAR					
<b>2005–06</b>	0.7474	0.4205	0.6143	85.90	63.3
<b>2006–07</b>	0.7863	0.4066	0.6018	93.21	64.8
<b>2007–08</b>	0.8968	0.4479	0.6099	98.63	69.7
MONTHS					
<b>2007</b>					
June	0.8423	0.4238	0.6274	103.34	68.5
July	0.8675	0.4266	0.6325	105.47	69.7
August	0.8282	0.4123	0.6083	96.63	66.8
September	0.8464	0.4196	0.6088	97.34	67.7
October	0.8984	0.4397	0.6316	104.04	71.0
November	0.8987	0.4335	0.6121	99.88	70.0
December	0.8726	0.4314	0.5987	97.88	68.2
<b>2008</b>					
January	0.8815	0.4479	0.5993	95.16	68.2
February	0.9128	0.4647	0.6192	97.84	70.2
March	0.9260	0.4622	0.5964	93.36	69.8
April	0.9298	0.4695	0.5899	95.30	70.0
May	0.9491	0.4828	0.6098	98.90	72.2
June	0.9508	0.4840	0.6116	101.75	72.8
July	0.9625	0.4840	0.6102	102.71	73.3
August	0.8810	0.4668	0.5890	96.33	68.6

- (a) These exchange rates and the trade-weighted index are derived using rates provided by the Reserve Bank of Australia in respect of each trading day.
- (b) May 1970 = 100. The Trade-weighted index is reweighted annually on 1 October and on special occasions as required.

## EXPLANATORY NOTES

### INTRODUCTION

**1** This publication presents preliminary estimates of Australia's international trade in goods and services on a balance of payments basis and merchandise import and export statistics on a recorded trade basis.

**2** Merchandise trade statistics on a recorded trade basis are compiled from information submitted by exporters and importers or their agents to the Australian Customs Service (ACS). Adjustments for coverage, timing and valuation are made to recorded trade data to convert them to a balance of payments basis. The main source for services data is the quarterly Survey of International Trade in Services.

**3** More comprehensive quarterly estimates of Australia's trade in goods and services, together with comprehensive details of Australia's balance of payments are included in the quarterly publication, *Balance of Payments and International Investment Position, Australia* (cat. no. 5302.0). Detailed monthly statistics on merchandise trade are available on Time Series Spreadsheets or by subscription to tailored services.

### CONCEPTS, SOURCES AND METHODS

**4** The conceptual framework used in compiling Australia's merchandise trade statistics can be found in *International Merchandise Trade, Australia: Concepts, Sources and Methods, 2001* (cat. no. 5489.0).

**5** The conceptual framework used in compiling Australia's balance of payments statistics is based on the Fifth Edition of the International Monetary Fund's *Balance of Payments Manual* (BPM5, 1993). Descriptions of the underlying concepts and structure of the balance of payments and the sources, methods and terms used in compiling the estimates are presented in *Balance of Payments and International Investment Position, Australia: Concepts, Sources and Methods, 1998* (cat. no. 5331.0). To bring merchandise trade statistics on a recorded trade basis to a balance of payments basis, timing adjustments are made to ensure that the transaction is recorded in the period in which ownership changed, rather than in the period in which the transaction was recorded by ACS. Adjustments are also made to account for the change of ownership of goods not included in merchandise trade statistics. Chapter 6 of cat. no. 5331.0 provides more detail on the relationship between statistics on international merchandise trade on a recorded trade basis and on a balance of payments basis.

**6** Both of the Concepts, Sources and Methods publications are available to download for free from the ABS website. Select *Methods, Classifications, Concepts & Standards*, then choose *ABS concepts, classifications and statistical standards* and then the catalogue numbers as above.

### SEASONAL ADJUSTMENT

**7** The estimates of international trade in goods and services on a balance of payments basis are seasonally adjusted, however the merchandise exports and imports statistics on a recorded trade basis are not. Monthly original estimates are volatile, being subject to calendar-related and large irregular influences. Seasonally adjusted estimates are derived by estimating and removing from the original series systematic calendar related effects, such as seasonal, trading day, length of month and moving holiday influences. Seasonal adjustment does not aim to remove the irregular or non-seasonal influences which may be present in any particular month. These irregular influences may reflect both random economic events and difficulties of statistical recording.

**8** The seasonally adjusted statistics in this publication use the concurrent seasonal adjustment technique and Autoregressive Integrated Moving Average (ARIMA) Modelling to estimate factors for the current and previous months. Under concurrent seasonal adjustment, the estimates of seasonal factors are fine tuned as new original estimates become available each period. The seasonally adjusted estimates are subject to revisions at each reference month as the estimates of seasonal factors are improved. For more information on seasonal adjustment methods, see *Information Paper: An Introductory Course on Time Series Analysis, Jan 2005* (cat. no. 1346.0.55.001), *Time Series Analysis*

## EXPLANATORY NOTES *continued*

### SEASONAL ADJUSTMENT *continued*

*Frequently Asked Questions, 2003* (cat. no. 1346.0.55.002), alternatively contact the Assistant Director, Time Series Analysis on (02) 6252 6345 or e-mail <time.series.analysis@abs.gov.au>.

### ARIMA MODELLING

**9** ARIMA modelling relies on the characteristics of the series being analysed to project future period data. ARIMA modelling is used on a case-by-case basis where it results in reduced revisions to seasonally adjusted series when subsequent data become available. The projected values are temporary, intermediate values, that are only used internally to improve the estimation of the seasonal factors. The projected data do not affect the original estimates and are discarded at the end of the seasonal adjustment process. The ARIMA model is assessed as part of the annual reanalysis and, following the 2008 annual re-analysis, 41 of the 42 directly seasonally adjusted trade in goods and services time series use an ARIMA model. For more information on the details of ARIMA modelling see *Feature article: Use of ARIMA modelling to reduce revisions* in the October 2004 issue of *Australian Economic Indicators* (cat. no. 1350.0).

### TREND ESTIMATES

**10** The month-to-month movements of the seasonally adjusted estimates may not be reliable indicators of trend behaviour because they include irregular or non-seasonal movements. Trend estimates are derived by applying a 13-term Henderson moving average to the seasonally adjusted series. The use of a 13-term Henderson average can result in revisions to the estimates for the most recent six months as additional observations become available. Revisions can also occur because of changes in the original data and as a result of the re-estimation of the seasonal factors. For more information on trend estimates methods, see *Information Paper: A Guide to Interpreting Time Series - Monitoring Trends* (cat. no. 1349.0), alternatively contact the Assistant Director, Time Series Analysis on (02) 6252 6345 or e-mail <time.series.analysis@abs.gov.au>.

### SIGN CONVENTION

**11** In keeping with balance of payments conventions, where statistics are on a balance of payments basis, credit entries (exports) are shown without sign and debit items (imports) are shown as negative entries. For statistics on a recorded trade basis, both imports and exports are shown without sign. The calculation of percentage changes on balance of payments debit items are made without regard to sign. References to balance of payments debit items in Key Figures, Key Points, and Analysis and Comments are also made without regard to sign.

### COMMODITY BREAKDOWNS OF GOODS

**12** For details of the classifications used to present goods exports (credits) and imports (debits) on a balance of payments basis, see tables 6.6 and 6.7, respectively, in *Balance of Payments and International Investment Position, Australia: Concepts, Sources and Methods, 1998* (cat. no. 5331.0).

**13** The correspondences used to compile statistics on a Balance of Payments basis were updated in the July 2008 issue with estimates for all time periods recompiled on the basis of the revised correspondences to maintain consistency in the time series.

**14** The recorded trade statistics shown in tables 12 and 13 are classified by the Standard International Trade Classification (SITC). Imports and exports of goods at a more detailed level are available from the Time Series spreadsheets. All data from July 2005 are presented according to SITC Rev 4 and data prior to July 2005 are presented according to SITC Rev 3. For details refer to the July 2008 issue of this publication.

### COMMODITY BREAKDOWNS OF SERVICES

**15** The quarterly detailed services data published in table 11 are consistent with the monthly aggregates shown in table 9.

**16** Monthly indicators for many of the services components that are only surveyed quarterly are not available. In particular, the Freight and Other transportation components of Total services credits are not available for publication on a monthly basis.

## EXPLANATORY NOTES *continued*

### COMMODITY BREAKDOWNS OF SERVICES *continued*

The estimates for these items shown in table 9 are therefore derived by dividing the quarterly estimate by three. Where quarterly survey data are not available, freight debits are derived directly from imports data for the reference month as a difference between total merchandise cost, insurance and freight (CIF) and free on board (FOB), adjusted to reflect timing and processing adjustments. For freight credits and other transportation credits and debits, estimates are derived by extrapolating the last month's data by an average of movements for the same month over the three previous years.

### CONFIDENTIALITY OF MERCHANDISE TRADE STATISTICS

**17** The release of statistics for certain merchandise trade commodities is restricted in order to prevent the identification of the activities of an individual business, where this is requested by the business concerned. These restrictions do not affect the total value of exports and imports, but they can affect statistics at the country, state and commodity levels. For information on the confidentiality restrictions applied to the merchandise trade statistics in this publication, refer to the current *International merchandise trade: Confidential Commodities List (CCL)* (cat. no. 5372.0.55.001) which can be accessed from ABS web site.

### TOURISM RELATED SERVICES

**18** The tourism related services memorandum items provide timely indicators of the movements in tourism related activities, not an absolute measure of the level of these activities. These series are not compiled on a balance of payments conceptual basis. However, they do provide a reasonable approximation of world tourism related activities.

**19** The memorandum items have been derived by re-aggregating relevant components of the international trade in services series of the balance of payments accounts. The tourism related indicator has been derived by combining total travel services (business, education-related and other personal travel) and passenger transportation services (which includes agency fees and commission receipts for air transport).

### SERVICES BY STATE AND BY PARTNER COUNTRY

**20** Annual services data by state and by partner country are released twice yearly. Calendar year data are usually released with the March issue of this publication and financial year data are released with the September issue. Refer to Time series data for details.

**21** Services credits are classified by the state of provision, while services debits are classified by the state of consumption. The state allocations for transportation, travel and communication services are based on a number of indicators including merchandise trade statistics by state, overseas passenger arrivals and departures by state of clearance and data provided by the Department of Education, Science and Training. The allocation for other services (about 25% of all trade in services) is primarily based on the location of the business reporting the information, which serves as a proxy for the state of provision/consumption of that service. The data should be used with care but are considered suitable for analysis over time.

**22** A comprehensive explanation of the data sources used and the methodology applied in the compilation of partner country statistics is provided in Chapter 17 of *Balance of Payments and International Investment Position, Australia - Concepts, Sources and Methods* (cat. no. 5331.0). Approximately 7% of total services credits and 5% of total services debits for 2006–07 are either confidential, or unable to be allocated to individual countries.

### ABS DATA AVAILABLE

**23** More detailed balance of payments and recorded merchandise trade data, including forward seasonal factors are available as time series spreadsheets or data cubes from the ABS website.

**24** More detailed merchandise trade data by commodity, country and state, and statistics included in this and related publications are available on request. Inquiries

## EXPLANATORY NOTES *continued*

### ABS DATA AVAILABLE

*continued*

should be made to the National Information and Referral Service as shown on the back of this publication.

### RELATED PRODUCTS AND PUBLICATIONS

**25** Users may also wish to refer to the following publications which can be downloaded free of charge from the ABS web site:

- *Balance of Payments and International Investment Position, Australia* (cat. no. 5302.0) – issued quarterly
- *International Merchandise Imports, Australia* (cat. no. 5439.0) – issued monthly
- *International Trade Price Indexes, Australia* (cat. no. 6457.0) – issued quarterly
- *Balance of Payments and International Investment Position, Australia: Concepts, Sources and Methods* (cat. no. 5331.0)
- *Information Paper: Quality of Australian Balance of Payments Statistics* (cat. no. 5342.0)
- *International Merchandise Trade, Australia: Concepts, Sources and Methods* (cat. no. 5489.0)
- *A Guide to Australian Balance of Payments and International Investment Position Statistics* (cat. no. 5362.0.55.001).

**26** Current publications produced by the ABS are listed in the *Catalogue of Publications and Products* (cat. no. 1101.0). The Catalogue is available from any ABS office or from this site. The ABS also issues a daily Release Advice on the web site which details products to be released in the week ahead.

### CAUTIONARY NOTE

**27** The tables in this publication are presented on two bases. Tables 1–11 contain estimates of Australia's international trade in goods and services which have been adjusted for coverage, valuation and timing to a balance of payments basis. Tables 12–15 contain estimates of merchandise exports and imports based on Australian Customs Service records. Paragraph 5 of the Explanatory Notes provides an explanation of the difference between these bases.

### ROUNDING

**28** Where figures have been rounded, discrepancies may occur between sums of the component items and totals. Percentage movements are calculated from data at the level of precision presented in this publication (i.e. \$m) except for international merchandise trade tables.

## APPENDIX RELATED ARTICLES

Article	Source(a)	Issue
<b>Investment</b>		
Foreign ownership of equity	5302.0	Sep qtr 2007
Foreign currency exposure	5308.0	Mar qtr 2005
Kangaroo bonds	5302.0	Sep qtr 2004
Gross external debt	5302.0	Sep qtr 2003
<b>Balance of payments</b>		
International comparison of balance of payments statistics	(b) 5363.0	1999–2000
<b>Merchandise trade</b>		
Number and characteristics of Australian exporters	5368.0.55.006	2006–2007
Export and import invoice currencies, 2006	5368.0	Dec 2007
100 years of international trade statistics	5368.0	Oct 2007
New methodology for deriving counts of Australian exports	5368.0	Feb 2006
Australia's Importers, 2003–04	5368.0	Nov 2004
Australia's Exporters, 2003–04	5368.0	Oct 2004
Australia's trade with the USA	5368.0	Mar 2004
Foreign ownership of Australian exporters and importers	5496.0.55.001	2002–2003
Major commodities traded by Australia, 1991 to 2000	(b) 5422.0	Dec qtr 2000
<b>Trade in services</b>		
International trade in services by partner country, 2006, preliminary	5368.0	Dec 2006
Changes to International trade in services statistics, August 2006	5368.0	Aug 2006
Changes to International trade in services travel statistics	5368.0	Aug 2005
<b>Finance</b>		
Impact of 2003–2004 farm season on Australian production	1350.0	Oct 2003
Recent trends in construction and first home buyers finance	5609.0	Mar 2002
Household sector data in the financial accounts	5232.0	Mar qtr 2002
<b>Technical information</b>		
Impact of introducing Revision 4 of the Standard International Trade Classification	5368.0.55.010	2008
Changes to international trade statistics July 2008	5368.0.55.009	2007–2008
Changes on 1 January 2007 to Statistical Codes in the AHECC and the Customs Tariff	1233.0.55.001	Nov 2006
ABS implementation in January 2007 of revisions to international trade classifications, 2007	5368.0.55.005	June 2006
Revised treatment of Goods for Processing in Merchandise Trade and Balance of Payments Statistics	5368.0	May 2006
Impact of Customs and ABS changes on import statistics from October 2005	5439.0	Oct 2005
ABS management of the impact of the implementation of the imports component of the New Customs System	5439.0	Aug 2005
Changes to country and port classifications	5368.0	May 2003
Implementation of New Customs Systems	5368.0	Aug 2004
The effect of customs changes on export statistics	5422.0	Jun qtr 2002
Data confidentiality	5422.0	Dec qtr 1999

(a) In the ABS web site home page, select Key Products; Papers & Articles; ABS Papers/Feature Articles; Papers/Feature Articles by Catalogue Number.

(b) This article can be found in pdf format by referring to the Downloads page of the specified issue of this publication on the ABS web site.

## FOR MORE INFORMATION . . .

*INTERNET*      **www.abs.gov.au** the ABS website is the best place for data from our publications and information about the ABS.

**INFORMATION AND REFERRAL SERVICE**

Our consultants can help you access the full range of information published by the ABS that is available free of charge from our website. Information tailored to your needs can also be requested as a 'user pays' service. Specialists are on hand to help you with analytical or methodological advice.

*PHONE*                      1300 135 070

*EMAIL*                      client.services@abs.gov.au

*FAX*                              1300 135 211

*POST*                          Client Services, ABS, GPO Box 796, Sydney NSW 2001

## FREE ACCESS TO STATISTICS

All statistics on the ABS website can be downloaded free of charge.

*WEB ADDRESS*      **www.abs.gov.au**